



[Go to Product page](#)

Datasheet for ABIN1322955

TMEM115 Protein (AA 1-351) (GST tag)

1 Image

Overview

Quantity:	10 µg
Target:	TMEM115
Protein Characteristics:	AA 1-351
Origin:	Human
Source:	Wheat germ
Protein Type:	Recombinant
Purification tag / Conjugate:	This TMEM115 protein is labelled with GST tag.
Application:	ELISA, Western Blotting (WB), Affinity Purification (AP), Antibody Array (AA)

Product Details

Purpose:	PL6 (Human) Recombinant Protein (P01)
Sequence:	MQRALPGARQ HLGAILASAS VVVKALCAAV LFLYLLSFAV DTGCLAVTPG YLFPPNFWIW TLATHGLMEQ HVWDVAISLT TVVAGRLLE PLWGALELLI FFSVVNVSVG LLGAFAYLLT YMASFNLVYL FTVRIHGALG FLGGVLVALK QTMGDCVVLR VPQVRVSVMP MLLLALLLL RLATLLQSPA LASYGFGLLS SWVYLRFYQR HSRGRGDMAD HFATFFPE ILQPVVGLLA NLVHSLLVKV KICQKTVKRY DVGAPSSITI SLPGTDPQDA ERRRQLALKA LNERLKRVED QSIWPSMDDD EEESGAKVDS PLPSDKAPTP PGKGAPESS LITFEAAPPT L
Characteristics:	Human PL6 full-length ORF (AAH17367, 1 a.a. - 351 a.a.) recombinant protein with GST-tag at N-terminal.
Purification:	in vitro wheat germ expression system

Target Details

Target:	TMEM115
Alternative Name:	TMEM115 (TMEM115 Products)
Background:	Full Gene Name: transmembrane protein 115 Synonyms: PL6
Gene ID:	11070

Application Details

Application Notes:	Optimal working dilution should be determined by the investigator.
Comment:	Preparation method: in vitro, wheat germ expression system Product Quality tested by: 12.5% SDS-PAGE Stained with Coomassie Blue.
Restrictions:	For Research Use only

Handling

Buffer:	50 mM Tris-HCl, 10 mM reduced Glutathione, pH =8.0 in the elution buffer.
Handling Advice:	Aliquot to avoid repeated freezing and thawing.
Storage:	-80 °C
Storage Comment:	Best use within three months from the date of receipt of this protein.

Images

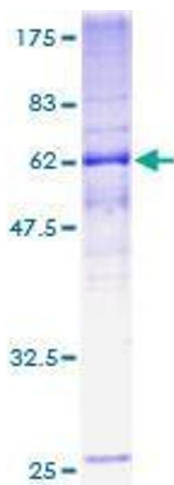


Image 1.