

Datasheet for ABIN1322959

TMEM120A Protein (AA 1-343) (GST tag)



[Go to Product page](#)

1 Image

Overview

Quantity:	10 µg
Target:	TMEM120A
Protein Characteristics:	AA 1-343
Origin:	Human
Source:	Wheat germ
Protein Type:	Recombinant
Purification tag / Conjugate:	This TMEM120A protein is labelled with GST tag.
Application:	ELISA, Western Blotting (WB), Affinity Purification (AP), Antibody Array (AA)

Product Details

Purpose:	TMEM120A (Human) Recombinant Protein (P01)
Sequence:	<p>MQPPPPGPLG DCLRDWEDLQ QDFQNIQETH RLYRLKLEEL TKLQNNCTSS ITRQKKRLQE LALALKKCKP SLPAAEAGAA QELENQMKER QGLFFDMEAY LPKKNGLYLS LVLGNVNVTL LSKQAKFAYK DEYEKFKLYL TIILILISFT CRFLNSRVT DAAFNFLLVW YYCTLTIRES ILINNGSRIK GWWVFHHYVS TFLSGVMLTW PDGLMYQKFR NQFLSFSMYQ SFVQFLQYYY QSGCLYRLRA LGERHTMDLT VEGFQSWMWR GLTFLLPFLF FGHFWQLFNA LTLFNLAQDP QCKEWQVLMC GFPFLLLFLG NFFTTLRVVH HKFHSQRHGS KKD</p>
Characteristics:	Human TMEM120A full-length ORF (NP_114131.1, 1 a.a. - 343 a.a.) recombinant protein with GST-tag at N-terminal.
Purification:	in vitro wheat germ expression system

Target Details

Target:	TMEM120A
Alternative Name:	TMEM120A (TMEM120A Products)
Background:	Full Gene Name: transmembrane protein 120A Synonyms: TMPIT
Gene ID:	83862
NCBI Accession:	NM_031925

Application Details

Application Notes:	Optimal working dilution should be determined by the investigator.
Comment:	Preparation method: in vitro, wheat germ expression system Product Quality tested by: 12.5% SDS-PAGE Stained with Coomassie Blue.
Restrictions:	For Research Use only

Handling

Buffer:	50 mM Tris-HCl, 10 mM reduced Glutathione, pH =8.0 in the elution buffer.
Handling Advice:	Aliquot to avoid repeated freezing and thawing.
Storage:	-80 °C
Storage Comment:	Best use within three months from the date of receipt of this protein.

Images

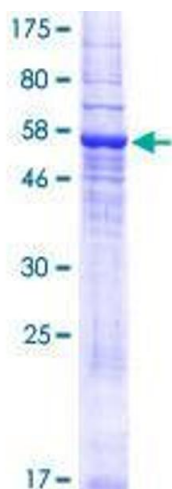


Image 1.