



Datasheet for ABIN1322964

TMEM126B Protein (AA 1-200) (GST tag)



[Go to Product page](#)

1 Image

Overview

Quantity:	10 µg
Target:	TMEM126B
Protein Characteristics:	AA 1-200
Origin:	Human
Source:	Wheat germ
Protein Type:	Recombinant
Purification tag / Conjugate:	This TMEM126B protein is labelled with GST tag.
Application:	ELISA, Western Blotting (WB), Affinity Purification (AP), Antibody Array (AA)

Product Details

Purpose:	TMEM126B (Human) Recombinant Protein (P01)
Sequence:	MAASMHGQPS PSLEDAKLRR PMVIEIIEKN FDYLRKEMTQ NIYQMATFGT TAGFSGIFSN FLFRRCFKVK HDALKTYASL ATLPFLSTVV TDKLFVIDAL YSDNISKENC VFRSSLIGIV CGVFYPSSLA FTKNGRLATK YHTVPLPPKG RVLHWMWTLT QTQMKLMAIP LVFQIMFGIL NGLYHYAVFE ETLEKTIHEE
Characteristics:	Human TMEM126B full-length ORF (NP_060950.2, 1 a.a. - 200 a.a.) recombinant protein with GST-tag at N-terminal.
Purification:	in vitro wheat germ expression system

Target Details

Target:	TMEM126B
---------	----------

Target Details

Alternative Name:	TMEM126B (TMEM126B Products)
Background:	Full Gene Name: transmembrane protein 126B Synonyms: HT007,MGC111203
Gene ID:	55863
NCBI Accession:	NM_018480

Application Details

Application Notes:	Optimal working dilution should be determined by the investigator.
Comment:	Preparation method: in vitro, wheat germ expression system Product Quality tested by: 12.5% SDS-PAGE Stained with Coomassie Blue.
Restrictions:	For Research Use only

Handling

Buffer:	50 mM Tris-HCl, 10 mM reduced Glutathione, pH =8.0 in the elution buffer.
Handling Advice:	Aliquot to avoid repeated freezing and thawing.
Storage:	-80 °C
Storage Comment:	Best use within three months from the date of receipt of this protein.

Images

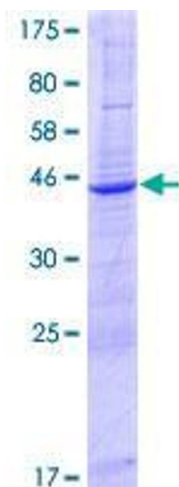


Image 1.