



Datasheet for ABIN1322969

**TMEM138 Protein (AA 1-162) (GST tag)**[Go to Product page](#)

## 1 Image

## Overview

Quantity:	10 µg
Target:	TMEM138
Protein Characteristics:	AA 1-162
Origin:	Human
Source:	Wheat germ
Protein Type:	Recombinant
Purification tag / Conjugate:	This TMEM138 protein is labelled with GST tag.
Application:	ELISA, Western Blotting (WB), Affinity Purification (AP), Antibody Array (AA)

## Product Details

Purpose:	HSPC196 (Human) Recombinant Protein (P01)
Sequence:	MLQTSNYSLV LSLQFLLSY DLFVNSFSEL LQKTPVIQLV LFIIQDIAVL FNIIIFLMF FNTFVFQAGL VNULLFHKFKG TIILTAVYFA LSISLHVWVM NLRWKNSNSF IWT DGLQMLF VFQRLAAVLY CYFYKRTAVR LGDPHFYQDS LWLRKEFMQV RR
Characteristics:	Human HSPC196 full-length ORF ( AAH05201, 1 a.a. - 162 a.a.) recombinant protein with GST-tag at N-terminal.
Purification:	in vitro wheat germ expression system

## Target Details

Target:	TMEM138
Alternative Name:	TMEM138 ( <a href="#">TMEM138 Products</a> )

## Target Details

Background: Full Gene Name: transmembrane protein 138  
Synonyms: HSPC196

Gene ID: 51524

## Application Details

Application Notes: Optimal working dilution should be determined by the investigator.

Comment: Preparation method: in vitro, wheat germ expression system  
Product Quality tested by: 12.5% SDS-PAGE Stained with Coomassie Blue.

Restrictions: For Research Use only

## Handling

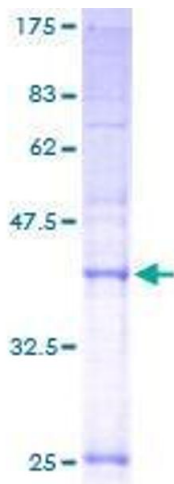
Buffer: 50 mM Tris-HCl, 10 mM reduced Glutathione, pH =8.0 in the elution buffer.

Handling Advice: Aliquot to avoid repeated freezing and thawing.

Storage: -80 °C

Storage Comment: Best use within three months from the date of receipt of this protein.

## Images



**Image 1.**