



[Go to Product page](#)

Datasheet for ABIN1322973

## TMEM150A Protein (AA 1-271) (GST tag)

### 1 Image

#### Overview

Quantity:	10 µg
Target:	TMEM150A
Protein Characteristics:	AA 1-271
Origin:	Human
Source:	Wheat germ
Protein Type:	Recombinant
Purification tag / Conjugate:	This TMEM150A protein is labelled with GST tag.
Application:	ELISA, Western Blotting (WB), Affinity Purification (AP), Antibody Array (AA)

#### Product Details

Purpose:	TMEM150 (Human) Recombinant Protein (P01)
Sequence:	MTAWILLPVS LSAFSITGIW TVYAMAVMNH HVCPVENWSY NESCPDPAE QGGPKTCCTL DDVPLISKCG SYPPESCLFS LIGNMGAFMV ALICLLRYGQ LLEQSRHSWV NTTALITGCT NAAGLLVVG N FQVDHARSLH YVGAGVAFPA GLLFVCLHCA LSYQGATAPL DLAVAYLRSV LAVIAFITLV LSGVFFVHES SQLQHGAALC EWVCVIDILI FYGTFSYEF G AVSSDTLVAA LQPTPGRACK SSGSSSTSTH LNCAPESIAM I
Characteristics:	Human TMEM150 full-length ORF ( NP_001026908.1, 1 a.a. - 271 a.a.) recombinant protein with GST-tag at N-terminal.
Purification:	in vitro wheat germ expression system

## Target Details

Target:	TMEM150A
Alternative Name:	TMEM150 ( <a href="#">TMEM150A Products</a> )
Background:	Full Gene Name: transmembrane protein 150 Synonyms: FLJ90024, TM6P1
Gene ID:	129303
NCBI Accession:	<a href="#">NM_001031738</a>

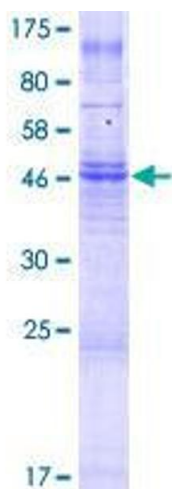
## Application Details

Application Notes:	Optimal working dilution should be determined by the investigator.
Comment:	Preparation method: in vitro, wheat germ expression system Product Quality tested by: 12.5% SDS-PAGE Stained with Coomassie Blue.
Restrictions:	For Research Use only

## Handling

Buffer:	50 mM Tris-HCl, 10 mM reduced Glutathione, pH =8.0 in the elution buffer.
Handling Advice:	Aliquot to avoid repeated freezing and thawing.
Storage:	-80 °C
Storage Comment:	Best use within three months from the date of receipt of this protein.

## Images



**Image 1.**