



[Go to Product page](#)

Datasheet for ABIN1322979

## TMEM170A Protein (AA 1-144) (GST tag)

### 1 Image

#### Overview

Quantity:	10 µg
Target:	TMEM170A
Protein Characteristics:	AA 1-144
Origin:	Human
Source:	Wheat germ
Protein Type:	Recombinant
Purification tag / Conjugate:	This TMEM170A protein is labelled with GST tag.
Application:	ELISA, Western Blotting (WB), Affinity Purification (AP), Antibody Array (AA)

#### Product Details

Purpose:	LOC124491 (Human) Recombinant Protein (P01)
Sequence:	MEREGSGGSG GSAGLLQQIL SLKVVPRVGN GTLCPNSTSL CSFPBMWYGV FLWALVSSLF FHVPAQLLAL FTLRHHKYGR FMSVSILLMG IVGPITAGIL TSAAIAGVYR AAGKEMIPFE ALTLGTGQTF CVLVVSFLRI LATL
Characteristics:	Human LOC124491 full-length ORF ( NP_660297.1, 1 a.a. - 144 a.a.) recombinant protein with GST-tag at N-terminal.
Purification:	in vitro wheat germ expression system

#### Target Details

Target:	TMEM170A
Alternative Name:	TMEM170A ( <a href="#">TMEM170A Products</a> )

## Target Details

Background: Full Gene Name: transmembrane protein 170A  
Synonyms: FLJ37611, TMEM170

Gene ID: 124491

NCBI Accession: [NM\\_145254](#)

## Application Details

Application Notes: Optimal working dilution should be determined by the investigator.

Comment: Preparation method: in vitro, wheat germ expression system  
Product Quality tested by: 12.5% SDS-PAGE Stained with Coomassie Blue.

Restrictions: For Research Use only

## Handling

Buffer: 50 mM Tris-HCl, 10 mM reduced Glutathione, pH =8.0 in the elution buffer.

Handling Advice: Aliquot to avoid repeated freezing and thawing.

Storage: -80 °C

Storage Comment: Best use within three months from the date of receipt of this protein.

## Images

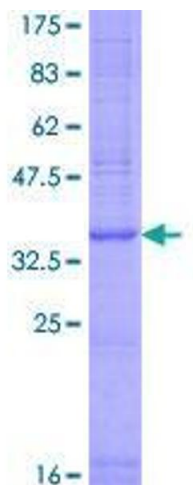


Image 1.