



[Go to Product page](#)

Datasheet for ABIN1322981

TMEM171 Protein (AA 1-323) (GST tag)

1 Image

Overview

Quantity:	10 µg
Target:	TMEM171
Protein Characteristics:	AA 1-323
Origin:	Human
Source:	Wheat germ
Protein Type:	Recombinant
Purification tag / Conjugate:	This TMEM171 protein is labelled with GST tag.
Application:	ELISA, Western Blotting (WB), Affinity Purification (AP), Antibody Array (AA)

Product Details

Purpose:	TMEM171 (Human) Recombinant Protein (P01)
Sequence:	MSPAAAAEPD GDQQDRHVSK LIFCFFVFGA VLLCVGVLLS IFGFQACQYK PLPDCPMVLK VAGPACAVVG LGAVILARSR AQLQLRAGLQ RGQQMDPDRA FIGGESRQFA QCLIFGFLFL TSGMLISVLG IWVPGCGSNW AQEPLNETDT GDSEPRMCGF LSLQIMGPLI VLVGLCFFVW AHVKKRNTLN AGQDASEREE GQIQIMEPVQ VTVGDSVIIF PPPPPYPFPE SSASAVAESP GTNSLLPNEN PPSYYSIFNY GTPTSEGAAS ERDCESIYTI SGTNSSEAS HTPHLPSELP PRYEKENAA ATFLPLSSEP SSP
Characteristics:	Human TMEM171 full-length ORF (AAH35310.1, 1 a.a. - 323 a.a.) recombinant protein with GST-tag at N-terminal.
Purification:	in vitro wheat germ expression system

Target Details

Target:	TMEM171
Alternative Name:	TMEM171 (TMEM171 Products)
Background:	Full Gene Name: transmembrane protein 171 Synonyms: PRP2
Gene ID:	134285

Application Details

Application Notes:	Optimal working dilution should be determined by the investigator.
Comment:	Preparation method: in vitro, wheat germ expression system Product Quality tested by: 12.5% SDS-PAGE Stained with Coomassie Blue.
Restrictions:	For Research Use only

Handling

Buffer:	50 mM Tris-HCl, 10 mM reduced Glutathione, pH =8.0 in the elution buffer.
Handling Advice:	Aliquot to avoid repeated freezing and thawing.
Storage:	-80 °C
Storage Comment:	Best use within three months from the date of receipt of this protein.

Images

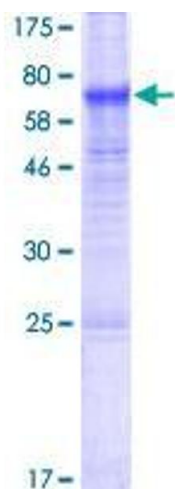


Image 1.