



[Go to Product page](#)

Datasheet for ABIN1322983

TMEM175 Protein (AA 1-504) (GST tag)

1 Image

Overview

Quantity:	10 µg
Target:	TMEM175
Protein Characteristics:	AA 1-504
Origin:	Human
Source:	Wheat germ
Protein Type:	Recombinant
Purification tag / Conjugate:	This TMEM175 protein is labelled with GST tag.
Application:	ELISA, Western Blotting (WB), Antibody Array (AA), Affinity Purification (AP)

Product Details

Purpose:	TMEM175 (Human) Recombinant Protein (P01)
Sequence:	MSQPRTPPEQA LDTPGDCPPG RRDEDAGEGI QCSQRMLSFS DALLSIIATV MILPVTHTTEI SPEQQFDRSV QRLLATRIAV YLMTFLIVTV AWAHTRLFQ VVGKTD DTLA LLNLACMMTI TFLPYTFSLM VTFPDVPLGI FLFCVCVIAI GVVQALIVGY AFHFP HLLSP QIQRSAHRAL YRRHVLGIVL QGPALCFAAA IFSLFFVPLS YLLMVTVILL PYVSKVTGWC RDRL LGHREP SAHPVEVFSF DLHEPLSKER VEA FSDGVYA IVATLLILDI CEDNVPDPKD VKERFSGSLV AALSATGPRF LAYFGSFATV GLLWFAHHSL FLHVRKATRA MGLLNTLSLA FVGGLPLAYQ QTSAFARQPR DELERVRVSC TIIFLASIFQ LAMWTTALLH QAETLQPSVW FGGREHVL MF AKLALYPCAS LLAFASTCLL SRFSVGIFHL MQIAVPCAFL LLRLLVGLAL ATLRVLRGLA RPEHPPPAPT GQDDPQSQLL P APC
Characteristics:	Human TMEM175 full-length ORF (NP_115702.1, 1 a.a. - 504 a.a.) recombinant protein with GST-tag at N-terminal.

Product Details

Purification: in vitro wheat germ expression system

Target Details

Target: TMEM175

Alternative Name: TMEM175 ([TMEM175 Products](#))

Background: Full Gene Name: transmembrane protein 175
Synonyms: MGC4618

Gene ID: 84286

NCBI Accession: [NM_032326](#)

Application Details

Application Notes: Optimal working dilution should be determined by the investigator.

Comment: Preparation method: in vitro, wheat germ expression system
Product Quality tested by: 12.5% SDS-PAGE Stained with Coomassie Blue.

Restrictions: For Research Use only

Handling

Buffer: 50 mM Tris-HCl, 10 mM reduced Glutathione, pH =8.0 in the elution buffer.

Handling Advice: Aliquot to avoid repeated freezing and thawing.

Storage: -80 °C

Storage Comment: Best use within three months from the date of receipt of this protein.

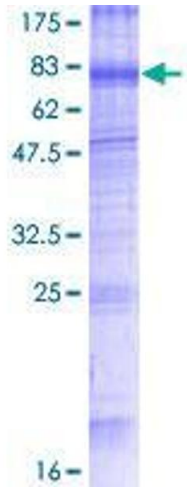


Image 1.