



[Go to Product page](#)

Datasheet for ABIN1322985

TMEM176A Protein (AA 1-235) (GST tag)

1 Image

Overview

Quantity:	10 µg
Target:	TMEM176A
Protein Characteristics:	AA 1-235
Origin:	Human
Source:	Wheat germ
Protein Type:	Recombinant
Purification tag / Conjugate:	This TMEM176A protein is labelled with GST tag.
Application:	ELISA, Western Blotting (WB), Affinity Purification (AP), Antibody Array (AA)

Product Details

Purpose:	TMEM176A (Human) Recombinant Protein (P01)
Sequence:	MGTADSDEMA PEAPQHTHID VHIHQESALA KLLLTCCSAL RPRATQARGS SLLLVASWVM QIVLGILSAV LGGFFYIRDY TLLVTSGAAI WTGAVAVLAG AAFIYEKRG GTYWALLRTL LTAAAFSTAI AAKLWNEDF RYGYSYNSA CRISSSSDWN TPAPTQSPEE VRRHLHCTSF MDMLKALFRT LQAMLLGVWI LLLLASLTPL WLYCWRMFPT KGKRDQKEML EVSGI
Characteristics:	Human TMEM176A full-length ORF (NP_060957.2, 1 a.a. - 235 a.a.) recombinant protein with GST-tag at N-terminal.
Purification:	in vitro wheat germ expression system

Target Details

Target:	TMEM176A
---------	----------

Target Details

Alternative Name:	TMEM176A (TMEM176A Products)
Background:	Full Gene Name: transmembrane protein 176A Synonyms: GS188,HCA112
Gene ID:	55365
NCBI Accession:	NM_018487

Application Details

Application Notes:	Optimal working dilution should be determined by the investigator.
Comment:	Preparation method: in vitro, wheat germ expression system Product Quality tested by: 12.5% SDS-PAGE Stained with Coomassie Blue.
Restrictions:	For Research Use only

Handling

Buffer:	50 mM Tris-HCl, 10 mM reduced Glutathione, pH =8.0 in the elution buffer.
Handling Advice:	Aliquot to avoid repeated freezing and thawing.
Storage:	-80 °C
Storage Comment:	Best use within three months from the date of receipt of this protein.

Images

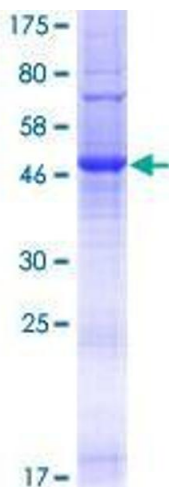


Image 1.