

Datasheet for ABIN1322990

## TMEM179 Protein (AA 1-197) (GST tag)



[Go to Product page](#)

### 1 Image

#### Overview

Quantity:	10 µg
Target:	TMEM179
Protein Characteristics:	AA 1-197
Origin:	Human
Source:	Wheat germ
Protein Type:	Recombinant
Purification tag / Conjugate:	This TMEM179 protein is labelled with GST tag.
Application:	ELISA, Western Blotting (WB), Affinity Purification (AP), Antibody Array (AA)

#### Product Details

Purpose:	TMEM179 (Human) Recombinant Protein (P01)
Sequence:	MALNNFLFAQ CACYFLAFLF SFVWVPLSE NGHDFRGRCL LFTEGMWLSA NLTVQERERF TVQEWGPPAA CRFSLLASLL SLLLAHAW RTLFFLCKGH EGSFFSAFLN LLVSAFVWFL VFIASIVSV GFTMWCDTIT EKGTVPHSCE ELQDIDLELG VDNSAFYDQF AIAQVGGSGQ EGRLAMLG GGG HLLLDIC
Characteristics:	Human TMEM179 full-length ORF ( AAI48845.1, 1 a.a. - 197 a.a.) recombinant protein with GST-tag at N-terminal.
Purification:	in vitro wheat germ expression system

#### Target Details

Target:	TMEM179
---------	---------

## Target Details

---

Alternative Name:	TMEM179 ( <a href="#">TMEM179 Products</a> )
Background:	Full Gene Name: transmembrane protein 179 Synonyms: C14orf90,FLJ42486,TMEM179A
Gene ID:	388021

## Application Details

---

Application Notes:	Optimal working dilution should be determined by the investigator.
Comment:	Preparation method: in vitro, wheat germ expression system Product Quality tested by: 12.5% SDS-PAGE Stained with Coomassie Blue.
Restrictions:	For Research Use only

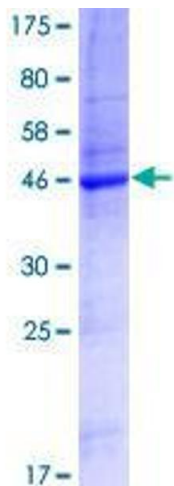
## Handling

---

Buffer:	50 mM Tris-HCl, 10 mM reduced Glutathione, pH =8.0 in the elution buffer.
Handling Advice:	Aliquot to avoid repeated freezing and thawing.
Storage:	-80 °C
Storage Comment:	Best use within three months from the date of receipt of this protein.

## Images

---



**Image 1.**