

Datasheet for ABIN1322992

## TMEM179B Protein (AA 1-219) (GST tag)



[Go to Product page](#)

### 1 Image

#### Overview

Quantity:	10 µg
Target:	TMEM179B
Protein Characteristics:	AA 1-219
Origin:	Human
Source:	Wheat germ
Protein Type:	Recombinant
Purification tag / Conjugate:	This TMEM179B protein is labelled with GST tag.
Application:	ELISA, Western Blotting (WB), Affinity Purification (AP), Antibody Array (AA)

#### Product Details

Purpose:	TMEM179B (Human) Recombinant Protein (P01)
Sequence:	MALSWLQRVE LALFAAAFLLC GAVAAAAMTR TQGSFSGRCP LYGVATLNGS SLALSRPSAP SLCYFVAGAS GLLALYCLLL LLFWIYSSCI EDSHRGAIGL RIALAISIA VFLVLVSACI LRFGTRSLCN SIISLNTTIS CSEAQKIPWT PPGTALQFYS NLHNAETSSW VNLVLWCVVL VLQVVQWKSE ATPYRPLERG DPEWSSETDA LVGSRLSHS
Characteristics:	Human TMEM179B full-length ORF ( NP_955369.1, 1 a.a. - 219 a.a.) recombinant protein with GST-tag at N-terminal.
Purification:	in vitro wheat germ expression system

#### Target Details

Target:	TMEM179B
---------	----------

## Target Details

Alternative Name:	TMEM179B ( <a href="#">TMEM179B Products</a> )
Background:	Full Gene Name: transmembrane protein 179B Synonyms:
Gene ID:	374395
NCBI Accession:	<a href="#">NM_199337</a>

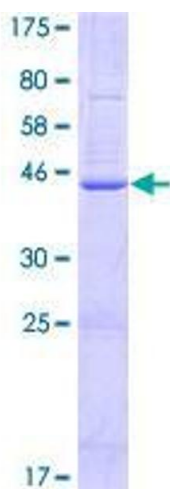
## Application Details

Application Notes:	Optimal working dilution should be determined by the investigator.
Comment:	Preparation method: in vitro, wheat germ expression system Product Quality tested by: 12.5% SDS-PAGE Stained with Coomassie Blue.
Restrictions:	For Research Use only

## Handling

Buffer:	50 mM Tris-HCl, 10 mM reduced Glutathione, pH =8.0 in the elution buffer.
Handling Advice:	Aliquot to avoid repeated freezing and thawing.
Storage:	-80 °C
Storage Comment:	Best use within three months from the date of receipt of this protein.

## Images



**Image 1.**