



[Go to Product page](#)

Datasheet for ABIN1322999

TMEM189-UBE2V1 Protein (AA 94-164) (GST tag)

1 Image

Overview

Quantity:	10 µg
Target:	TMEM189-UBE2V1
Protein Characteristics:	AA 94-164
Origin:	Human
Source:	Wheat germ
Protein Type:	Recombinant
Purification tag / Conjugate:	This TMEM189-UBE2V1 protein is labelled with GST tag.
Application:	Affinity Purification (AP), Antibody Array (AA), ELISA, Western Blotting (WB)

Product Details

Purpose:	Kua-UEV (Human) Recombinant Protein (Q01)
Sequence:	VHWGADTWGS VELPIVGKAF IRPFREHHID PTAITRHDFI ETNGDNCLVT LLPLLN MAYK FRTHSPEALE Q
Characteristics:	Human Kua-UEV partial ORF (NP_954673, 94 a.a. - 164 a.a.) recombinant protein with GST-tag at N-terminal.
Purification:	in vitro wheat germ expression system

Target Details

Target:	TMEM189-UBE2V1
Alternative Name:	TMEM189-UBE2V1 (TMEM189-UBE2V1 Products)

Target Details

Background:	Full Gene Name: TMEM189-UBE2V1 readthrough transcript Synonyms: CROC-1B,Kua-UEV,UBE2V1
Gene ID:	387522
NCBI Accession:	NM_199203

Application Details

Application Notes:	Optimal working dilution should be determined by the investigator.
Comment:	Preparation method: in vitro, wheat germ expression system Product Quality tested by: 12.5% SDS-PAGE Stained with Coomassie Blue.
Restrictions:	For Research Use only

Handling

Buffer:	50 mM Tris-HCl, 10 mM reduced Glutathione, pH =8.0 in the elution buffer.
Handling Advice:	Aliquot to avoid repeated freezing and thawing.
Storage:	-80 °C
Storage Comment:	Best use within three months from the date of receipt of this protein.

Images

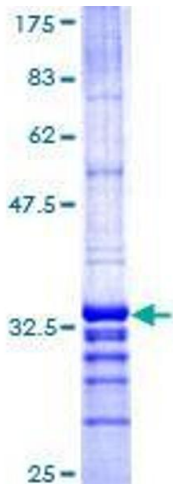


Image 1.