



[Go to Product page](#)

Datasheet for ABIN1323003

## TMEM200A Protein (AA 1-491) (GST tag)

### 1 Image

#### Overview

Quantity:	10 µg
Target:	TMEM200A
Protein Characteristics:	AA 1-491
Origin:	Human
Source:	Wheat germ
Protein Type:	Recombinant
Purification tag / Conjugate:	This TMEM200A protein is labelled with GST tag.
Application:	ELISA, Western Blotting (WB), Affinity Purification (AP), Antibody Array (AA)

#### Product Details

Purpose:	TMEM200A (Human) Recombinant Protein (P01)
Sequence:	MIATGGVITG LAALKRQDSA RSQQHVNLS SPATQEKKPI RRRPRADV VV VRGKIRLYSP SGFFLILGVL ISIIAMAV LGYWPQKEHF IDAETTLSTN ETQVIRNEGG VVVRFFEQHL HSDKMKMLGP FTMGIGIFIF ICANAILHEN RDKETKIIHM RDIYSTVIDI HTLRIKEQRQ MNGMYTGLMG ETEVKQNGSS CASRLAANTI ASFSGFRSSF RMDSSVEEDE LMLNEGKSSG HLMPPLLSDS SVSVFGLYPP PSKTTDDKTS GSKKCETKSI VSSSISAFTL PVIKLNNCVI DEPSIDNITE DADNLKRSR NLSMDSL VVP LPNTSESFQP VSTVLP RNNS IGESLSSQYK SSMALGPGAG QLLSPGAARR QFGSNTSLHL LSSHKS LLDL DRGPSTLTVQ AEQRKHPSWP RLDRNNSKGY MKLENKEDPM DRLLVPQVAI KKDFTNKEKL LMISRSHNNL SFEHDEF LSN NLKRG TSETR F
Characteristics:	Human TMEM200A full-length ORF ( NP_443145.1, 1 a.a. - 491 a.a.) recombinant protein with GST-tag at N-terminal.

## Product Details

---

Purification: in vitro wheat germ expression system

## Target Details

---

Target: TMEM200A

Alternative Name: TMEM200A ([TMEM200A Products](#))

Background: Full Gene Name: transmembrane protein 200A  
Synonyms: KIAA1913,TTMA,TTMC

Gene ID: 114801

NCBI Accession: [NM\\_052913](#)

## Application Details

---

Application Notes: Optimal working dilution should be determined by the investigator.

Comment: Preparation method: in vitro, wheat germ expression system  
Product Quality tested by: 12.5% SDS-PAGE Stained with Coomassie Blue.

Restrictions: For Research Use only

## Handling

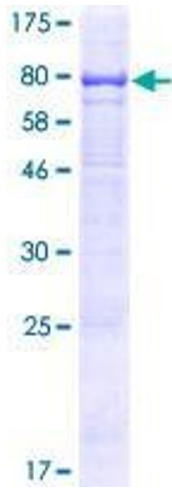
---

Buffer: 50 mM Tris-HCl, 10 mM reduced Glutathione, pH =8.0 in the elution buffer.

Handling Advice: Aliquot to avoid repeated freezing and thawing.

Storage: -80 °C

Storage Comment: Best use within three months from the date of receipt of this protein.



**Image 1.**