



[Go to Product page](#)

Datasheet for ABIN1323013

TMEM30A Protein (AA 1-361) (GST tag)

1 Image

Overview

Quantity:	10 µg
Target:	TMEM30A
Protein Characteristics:	AA 1-361
Origin:	Human
Source:	Wheat germ
Protein Type:	Recombinant
Purification tag / Conjugate:	This TMEM30A protein is labelled with GST tag.
Application:	ELISA, Western Blotting (WB), Affinity Purification (AP), Antibody Array (AA)

Product Details

Purpose:	TMEM30A (Human) Recombinant Protein (P01)
Sequence:	MAMNYNAKDE VDGPPCAPG GTAKTRRPDN TAFKQQLPA WQPILTAGTV LPIFFIIGLI FIPIGIGIFV TSNNIREIEI DYTGTPESSP CNKCLSPDVT PCFCTINFTL EKSFEGNVFM YYGLSNFYQN HRRYVKS RDD SQLNGDSSAL LNPSKECEPY RRNEDKPIAP CGAIANSMFN DTLELFLIGN DSYPIPIALK KKGIAWWTDK NVKFRNPPGG DNLEERFKGT TKPVNWLKPV YMLDSDPDNN GFINEDFIVW MRTAALPTFR KLYRLIERKS DLHPTLPAGR YSLNVTYNYP VHYFDGRKRM ILSTISWMGG KNPFLGIAYI AVGSISFLLG VLLVINHKY RNSSNTADIT I
Characteristics:	Human TMEM30A full-length ORF (NP_060717.1, 1 a.a. - 361 a.a.) recombinant protein with GST-tag at N-terminal.
Purification:	in vitro wheat germ expression system

Target Details

Target:	TMEM30A
Alternative Name:	TMEM30A (TMEM30A Products)
Background:	Full Gene Name: transmembrane protein 30A Synonyms: C6orf67,CDC50A,FLJ10856
Gene ID:	55754
NCBI Accession:	NM_018247

Application Details

Application Notes:	Optimal working dilution should be determined by the investigator.
Comment:	Preparation method: in vitro, wheat germ expression system Product Quality tested by: 12.5% SDS-PAGE Stained with Coomassie Blue.
Restrictions:	For Research Use only

Handling

Buffer:	50 mM Tris-HCl, 10 mM reduced Glutathione, pH =8.0 in the elution buffer.
Handling Advice:	Aliquot to avoid repeated freezing and thawing.
Storage:	-80 °C
Storage Comment:	Best use within three months from the date of receipt of this protein.

Images

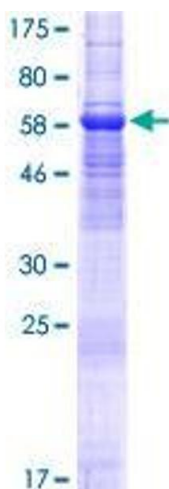


Image 1.