



[Go to Product page](#)

Datasheet for ABIN1323015

TMEM33 Protein (AA 1-247) (GST tag)

1 Image

Overview

Quantity:	25 µg
Target:	TMEM33
Protein Characteristics:	AA 1-247
Origin:	Human
Source:	Wheat germ
Protein Type:	Recombinant
Purification tag / Conjugate:	This TMEM33 protein is labelled with GST tag.
Application:	ELISA, Western Blotting (WB), Affinity Purification (AP), Antibody Array (AA)

Product Details

Purpose:	TMEM33 (Human) Recombinant Protein (P01)
Sequence:	MADTTPNGPQ GAGAVQFMMT NKLDTAMWLS RLFTVYCSAL FVLPLLGLHE AASFYQRALL ANALTSALRL HQRLPHFQLS RAFLAQALLE DSCHYLLYSL IFVNSYPVTM SIFPVLLFSL LHAATYTKKV LDARGNSLPL LRSVLDKLS ANQQNILKFI ACNEIFLMPA TVFMLFSGQG SLLQPFIYYR FLTLRYSSRR NPYCRTLFNE LRIVVEHIIM KPACPLFVRR LCLQSIAFIS RLAPTVP
Characteristics:	Human TMEM33 full-length ORF (AAH00948.2, 1 a.a. - 247 a.a.) recombinant protein with GST-tag at N-terminal.
Purification:	in vitro wheat germ expression system

Target Details

Target:	TMEM33
---------	--------

Target Details

Alternative Name:	TMEM33 (TMEM33 Products)
Background:	Full Gene Name: transmembrane protein 33 Synonyms: 1600019D15Rik,FLJ10525,SHINC3
Gene ID:	55161

Application Details

Application Notes:	Optimal working dilution should be determined by the investigator.
Comment:	Preparation method: in vitro, wheat germ expression system Product Quality tested by: 12.5% SDS-PAGE Stained with Coomassie Blue.
Restrictions:	For Research Use only

Handling

Buffer:	50 mM Tris-HCl, 10 mM reduced Glutathione, pH =8.0 in the elution buffer.
Handling Advice:	Aliquot to avoid repeated freezing and thawing.
Storage:	-80 °C
Storage Comment:	Best use within three months from the date of receipt of this protein.

Images

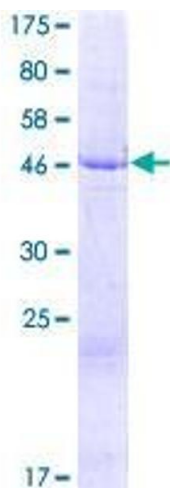


Image 1.