



[Go to Product page](#)

Datasheet for ABIN1323019

## TMEM39A Protein (AA 1-488) (GST tag)

### 1 Image

#### Overview

Quantity:	10 µg
Target:	TMEM39A
Protein Characteristics:	AA 1-488
Origin:	Human
Source:	Wheat germ
Protein Type:	Recombinant
Purification tag / Conjugate:	This TMEM39A protein is labelled with GST tag.
Application:	ELISA, Western Blotting (WB), Affinity Purification (AP), Antibody Array (AA)

#### Product Details

Purpose:	TMEM39A (Human) Recombinant Protein (P01)
Sequence:	<p>MPGGRRGPSR QQLRSALPS LQTLVGGGCG NGTGLRNRNG SAIGLPVPI TALITPGPVR</p> <p>HCQIPDLPVD GLLFEFLFF IYLLVALFIQ YINIYKTVWW YPYNHPASCT SLNFHLIDYH</p> <p>LAAFITVMLA RRLVWALISE ATKAGAASMI HYMVLISARL VLLTLCGWVL CWTLVNLFRS</p> <p>HSVLNLLFLG YPFGVYVPLC CFHQDSRAHL LLTDYNYVVQ HEAVEESAST VGGLAKSKDF</p> <p>LSLLESLEKE QFNNATPIPT HSCPLSPDLI RNEVECLKAD FNHRIKEVLF NSLFSAYYVA</p> <p>FLPLCFVKST QYYDMRWSCE HLIMVWINAF VMLTTQLLPS KYCDLLHKSA AHLGKWQKLE</p> <p>HGSYSNAPQH IWSENTIWPQ GVLVRHSRCL YRAMGPYNVA VPSDVSHARF YFLFHRPLRL</p> <p>LNLLILIEGS VVFYQLYSLL RSEKWNHTLS MALILFCNYY VLFKLLRDRI VLGRAYSYPL NSYELKAN</p>
Characteristics:	Human TMEM39A full-length ORF ( NP_060736.1, 1 a.a. - 488 a.a.) recombinant protein with GST-tag at N-terminal.

## Product Details

---

Purification: in vitro wheat germ expression system

## Target Details

---

Target: TMEM39A

Alternative Name: TMEM39A ([TMEM39A Products](#))

Background: Full Gene Name: transmembrane protein 39A  
Synonyms: FLJ10902

Gene ID: 55254

NCBI Accession: [NM\\_018266](#)

## Application Details

---

Application Notes: Optimal working dilution should be determined by the investigator.

Comment: Preparation method: in vitro, wheat germ expression system  
Product Quality tested by: 12.5% SDS-PAGE Stained with Coomassie Blue.

Restrictions: For Research Use only

## Handling

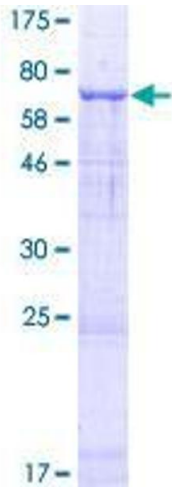
---

Buffer: 50 mM Tris-HCl, 10 mM reduced Glutathione, pH =8.0 in the elution buffer.

Handling Advice: Aliquot to avoid repeated freezing and thawing.

Storage: -80 °C

Storage Comment: Best use within three months from the date of receipt of this protein.



**Image 1.**