



[Go to Product page](#)

Datasheet for ABIN1323021

## TMEM39B Protein (AA 1-365) (GST tag)

### 1 Image

#### Overview

Quantity:	25 µg
Target:	TMEM39B
Protein Characteristics:	AA 1-365
Origin:	Human
Source:	Wheat germ
Protein Type:	Recombinant
Purification tag / Conjugate:	This TMEM39B protein is labelled with GST tag.
Application:	ELISA, Western Blotting (WB), Affinity Purification (AP), Antibody Array (AA)

#### Product Details

Purpose:	TMEM39B (Human) Recombinant Protein (P01)
Sequence:	MVTTIVLGRR FIGSIVKEAS QRGKVSLFRS ILLFLTRFTV LTATGWSLCR SLIHLFRTYS FLNLLFLCYP FGMYIPFLQL NCDLRKTSLF NHMASMGPRE AVSGLAKSRD YLLTLRETWK QHTRQLYGPD AMPTHACCLS PSLIRSEVEF LKMDFNWRMK EVLVSSMLSA YYVAFVPVWF VKNTHYYDKR WSCELFLLVS ISTSVILMQH LLPASYCDLL HKAAAHLCGW QKVDPALCSN VLQHPWTEEC MWPQGVLVKH SKNVYKAVGH YNVAIPSDVS HFRFHFFFSK PLRILNILL LEGAVIVYQL YSLMSSEKWH QTISLALILF SNYYAFFKLL RDRLVLGKAY SYSASPQRDL DHRFS
Characteristics:	Human TMEM39B full-length ORF ( NP_060526.1, 1 a.a. - 365 a.a.) recombinant protein with GST-tag at N-terminal.
Purification:	in vitro wheat germ expression system

## Target Details

Target:	TMEM39B
Alternative Name:	TMEM39B ( <a href="#">TMEM39B Products</a> )
Background:	Full Gene Name: transmembrane protein 39B Synonyms: FLJ10315
Gene ID:	55116
NCBI Accession:	<a href="#">NM_018056</a>
Pathways:	<a href="#">SARS-CoV-2 Protein Interactome</a>

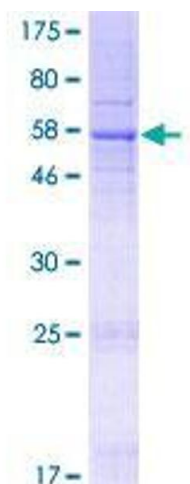
## Application Details

Application Notes:	Optimal working dilution should be determined by the investigator.
Comment:	Preparation method: in vitro, wheat germ expression system Product Quality tested by: 12.5% SDS-PAGE Stained with Coomassie Blue.
Restrictions:	For Research Use only

## Handling

Buffer:	50 mM Tris-HCl, 10 mM reduced Glutathione, pH =8.0 in the elution buffer.
Handling Advice:	Aliquot to avoid repeated freezing and thawing.
Storage:	-80 °C
Storage Comment:	Best use within three months from the date of receipt of this protein.

## Images



**Image 1.**