



[Go to Product page](#)

Datasheet for ABIN1323024

TMEM41B Protein (AA 1-192) (GST tag)

1 Image

Overview

Quantity:	10 µg
Target:	TMEM41B
Protein Characteristics:	AA 1-192
Origin:	Human
Source:	Wheat germ
Protein Type:	Recombinant
Purification tag / Conjugate:	This TMEM41B protein is labelled with GST tag.
Application:	ELISA, Western Blotting (WB), Affinity Purification (AP), Antibody Array (AA)

Product Details

Purpose:	TMEM41B (Human) Recombinant Protein (P01)
Sequence:	MAKGRVAERS QLGAHHTTPV GDGAAGTRGL AAPGSRDHQK EKSWEAGSA RMSLLILVSI FLSAAFVMFL VYKNFPQLSE EERVNMKVPR DMDDAKALGK VLSKYKDTFY VQVLVAYFAT YIFYQLANIC YSRLYISQYT LRVLSLSLSTS LISCLFVFWT WCLFLLYAFL FSWETSCIQI PNRESSKMVT AG
Characteristics:	Human TMEM41B full-length ORF (AAH35034.1, 1 a.a. - 192 a.a.) recombinant protein with GST-tag at N-terminal.
Purification:	in vitro wheat germ expression system

Target Details

Target:	TMEM41B
---------	---------

Target Details

Alternative Name:	TMEM41B (TMEM41B Products)
Background:	Full Gene Name: transmembrane protein 41B Synonyms: KIAA0033,MGC33897,MGC57262
Gene ID:	440026

Application Details

Application Notes:	Optimal working dilution should be determined by the investigator.
Comment:	Preparation method: in vitro, wheat germ expression system Product Quality tested by: 12.5% SDS-PAGE Stained with Coomassie Blue.
Restrictions:	For Research Use only

Handling

Buffer:	50 mM Tris-HCl, 10 mM reduced Glutathione, pH =8.0 in the elution buffer.
Handling Advice:	Aliquot to avoid repeated freezing and thawing.
Storage:	-80 °C
Storage Comment:	Best use within three months from the date of receipt of this protein.

Images

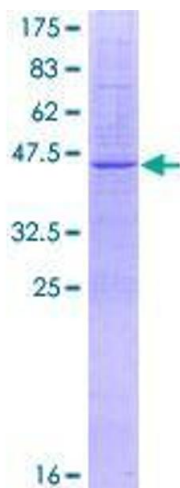


Image 1.