



[Go to Product page](#)

Datasheet for ABIN1323028

TMEM45B Protein (AA 1-275) (GST tag)

1 Image

Overview

Quantity:	10 µg
Target:	TMEM45B
Protein Characteristics:	AA 1-275
Origin:	Human
Source:	Wheat germ
Protein Type:	Recombinant
Purification tag / Conjugate:	This TMEM45B protein is labelled with GST tag.
Application:	ELISA, Western Blotting (WB), Affinity Purification (AP), Antibody Array (AA)

Product Details

Purpose:	TMEM45B (Human) Recombinant Protein (P01)
Sequence:	MANFKGHALP GSFFLIIGLC WSVKYPLKYF SHTRKNSPLH YYQRLEIVEA AIRTLFSVTG ILAEQFVPDG PHLHLYHENH WIKLMNWQHS TMYLFFAVSG IVDMLTYLVS HVPLGVDRDLV MAVAVFMEGF LFYYHVHNRPLDQHIHSL LYLALFGGCVS ISLEVIFRDH IVLELFRFRTSL IILQGTWFWQ IGFVLFPPFG TPEWDQKDDA NLMFITMCFC WHYLAALSIV AVNYSLVYCL LTRMKRHGRG EIIGIQLNS DDTYQTALLS GSDEE
Characteristics:	Human TMEM45B full-length ORF (NP_620143.1, 1 a.a. - 275 a.a.) recombinant protein with GST-tag at N-terminal.
Purification:	in vitro wheat germ expression system

Target Details

Target:	TMEM45B
Alternative Name:	TMEM45B (TMEM45B Products)
Background:	Gene: transmembrane protein 45B Synonyms: FLJ40787
Gene ID:	120224
NCBI Accession:	NM_138788

Application Details

Application Notes:	Optimal working dilution should be determined by the investigator.
Restrictions:	For Research Use only

Handling

Buffer:	50 mM Tris-HCl, 10 mM reduced Glutathione, pH =8.0 in the elution buffer.
Handling Advice:	Aliquot to avoid repeated freezing and thawing.
Storage:	-80 °C
Storage Comment:	Best use within three months from the date of receipt of this protein.

Images

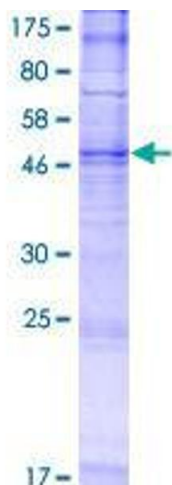


Image 1.