



[Go to Product page](#)

Datasheet for ABIN1323038

## TMEM64 Protein (AA 1-186) (GST tag)

### 1 Image

#### Overview

Quantity:	10 µg
Target:	TMEM64
Protein Characteristics:	AA 1-186
Origin:	Human
Source:	Wheat germ
Protein Type:	Recombinant
Purification tag / Conjugate:	This TMEM64 protein is labelled with GST tag.
Application:	ELISA, Western Blotting (WB), Antibody Array (AA), Affinity Purification (AP)

#### Product Details

Purpose:	TMEM64 (Human) Recombinant Protein (P01)
Sequence:	MGLMMVGVLI GTFIAHVVCK RLLTAWVAAR IQSSEKLSAV IRVVEGGSGL KVALARLTP IPFGLQNAVF SITDLSLPNY LMASSVGLLP TQLLNSYLGT TLRTMEDVIA EQSVSGYFVF CLQIIISIGL MFYVWHRAQV ELNAAIVACE MELKSSLVKG NQPNTSGSSF YNKRTLTFSG GGINVV
Characteristics:	Human TMEM64 full-length ORF ( NP_001008495.1, 1 a.a. - 186 a.a.) recombinant protein with GST-tag at N-terminal.
Purification:	in vitro wheat germ expression system

#### Target Details

Target:	TMEM64
Alternative Name:	TMEM64 ( <a href="#">TMEM64 Products</a> )

## Target Details

---

Background: Full Gene Name: transmembrane protein 64  
Synonyms: DKFZp762C1112

---

Gene ID: 169200

---

NCBI Accession: [NM\\_001008495](#)

---

## Application Details

---

Application Notes: Optimal working dilution should be determined by the investigator.

---

Comment: Preparation method: in vitro, wheat germ expression system  
Product Quality tested by: 12.5% SDS-PAGE Stained with Coomassie Blue.

---

Restrictions: For Research Use only

---

## Handling

---

Buffer: 50 mM Tris-HCl, 10 mM reduced Glutathione, pH =8.0 in the elution buffer.

---

Handling Advice: Aliquot to avoid repeated freezing and thawing.

---

Storage: -80 °C

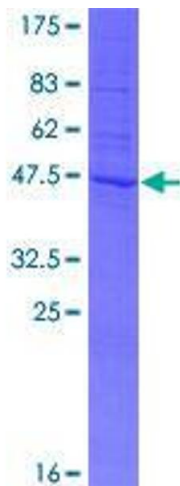
---

Storage Comment: Best use within three months from the date of receipt of this protein.

---

## Images

---



**Image 1.**