

Datasheet for ABIN1323048

TMEM81 Protein (AA 1-255) (GST tag)[Go to Product page](#)**1** Image

Overview

Quantity:	10 µg
Target:	TMEM81
Protein Characteristics:	AA 1-255
Origin:	Human
Source:	Wheat germ
Protein Type:	Recombinant
Purification tag / Conjugate:	This TMEM81 protein is labelled with GST tag.
Application:	ELISA, Western Blotting (WB), Affinity Purification (AP), Antibody Array (AA)

Product Details

Purpose:	TMEM81 (Human) Recombinant Protein (P01)
Sequence:	MKVLATSFVL GSLGLAFYLP LVVTPKTLA IPEKLQEAVG KVIINATTCT VTCGLGYKEE TVCEVGPDGV RRCQTRRLE CLTNWICGML HFTILIGKEF ELSCLSSDIL EFGQEAFRFT WRLARGVIST DDEVFKPFQA NSHFVKFKYA QEYDSGTYRC DVQLVKNLRL VKRLYFGLRV LPPNLVNLNF HQSLTEDQKL IDEGLEVNLD SYSKPHHPKW KKKVASALGI GIAIGVGGV LVRIVLCALR GGLQQ
Characteristics:	Human TMEM81 full-length ORF (NP_976310.1, 1 a.a. - 255 a.a.) recombinant protein with GST-tag at N-terminal.
Purification:	in vitro wheat germ expression system

Target Details

Target:	TMEM81
Alternative Name:	TMEM81 (TMEM81 Products)
Background:	Full Gene Name: transmembrane protein 81 Synonyms: HC3107,KVLA2788,MGC75217,UNQ2788
Gene ID:	388730
NCBI Accession:	NM_203376

Application Details

Application Notes:	Optimal working dilution should be determined by the investigator.
Comment:	Preparation method: in vitro, wheat germ expression system Product Quality tested by: 12.5% SDS-PAGE Stained with Coomassie Blue.
Restrictions:	For Research Use only

Handling

Buffer:	50 mM Tris-HCl, 10 mM reduced Glutathione, pH =8.0 in the elution buffer.
Handling Advice:	Aliquot to avoid repeated freezing and thawing.
Storage:	-80 °C
Storage Comment:	Best use within three months from the date of receipt of this protein.

Images

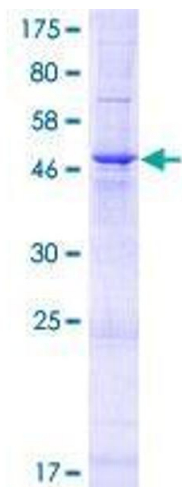


Image 1.