

Datasheet for ABIN1323096

## TMPRSS5 Protein (AA 258-357) (GST tag)



[Go to Product page](#)

### 1 Image

#### Overview

Quantity:	10 µg
Target:	TMPRSS5
Protein Characteristics:	AA 258-357
Origin:	Human
Source:	Wheat germ
Protein Type:	Recombinant
Purification tag / Conjugate:	This TMPRSS5 protein is labelled with GST tag.
Application:	ELISA, Western Blotting (WB), Affinity Purification (AP), Antibody Array (AA)

#### Product Details

Purpose:	TMPRSS5 (Human) Recombinant Protein (Q01)
Sequence:	HCMHSFRLAR LSSWRVHAGL VSHSAVRPHQ GALVERIIPH PLYSAQNHDY DVALLRLQTA LNFSDTVGAV CLPAKEQHFP KGSRCWVSGW GHTHPSHTYS
Characteristics:	Human TMPRSS5 partial ORF ( NP_110397.1, 258 a.a. - 357 a.a.) recombinant protein with GST-tag at N-terminal.
Purification:	in vitro wheat germ expression system

#### Target Details

Target:	TMPRSS5
Alternative Name:	TMPRSS5 ( <a href="#">TMPRSS5 Products</a> )

## Target Details

Background:	Full Gene Name: transmembrane protease, serine 5 Synonyms: MGC141886,MGC148044,SPINESIN
Gene ID:	80975
NCBI Accession:	<a href="#">NM_030770</a>

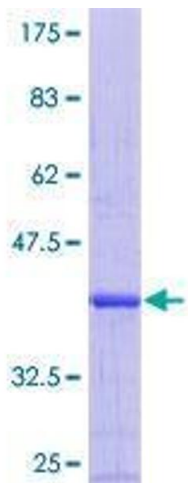
## Application Details

Application Notes:	Optimal working dilution should be determined by the investigator.
Comment:	Preparation method: in vitro, wheat germ expression system Product Quality tested by: 12.5% SDS-PAGE Stained with Coomassie Blue.
Restrictions:	For Research Use only

## Handling

Buffer:	50 mM Tris-HCl, 10 mM reduced Glutathione, pH =8.0 in the elution buffer.
Handling Advice:	Aliquot to avoid repeated freezing and thawing.
Storage:	-80 °C
Storage Comment:	Best use within three months from the date of receipt of this protein.

## Images



**Image 1.**