

Datasheet for ABIN1323113
TMTC2 Protein (AA 1-836) (GST tag)



[Go to Product page](#)

1 Image

Overview

Quantity:	25 µg
Target:	TMTC2
Protein Characteristics:	AA 1-836
Origin:	Human
Source:	Wheat germ
Protein Type:	Recombinant
Purification tag / Conjugate:	This TMTC2 protein is labelled with GST tag.
Application:	ELISA, Western Blotting (WB), Affinity Purification (AP), Antibody Array (AA)

Product Details

Purpose:	TMTC2 (Human) Recombinant Protein (P01)
Sequence:	MIAELVSSAL GLALYLNTLS ADFCYDDSRA IKTNQDLLPE TPWTHIFYND FWGTLTTHSG SHKSYRPLCT LSFRLNHAIG GLNPWSYHLV NVLLHAAVTG LFTSFSKILL GDGYWTFMAG LMFASHPIHT EAVAGIVGRA DVGASLFFLL SLLCYIKHCS TRGYSARTWG WFLGSGLCAG CSMLWKEQGV TVLAVSAVYD VVVFHRLKIK QILPTIYKRK NLSLFLSISL LIFWGSSLLG ARLYWMGNKP PSFSNSDNPA ADSDLLTRT LTFYLPYTKN LWLLCPDTL SFDWSMDAVP LLKTVCWDRN LHTVAFYTGL LLLAYYGLKS PSVDRECNGK TVTNGKQAN GHSCLSDVEY QNSETKSSFA SKVENGIKND VSQRTQLPST ENIVVLSLSL LIIPFVPATN LFFYVGFVIA ERVLVYPSMG FCLLITVGAR ALYVKVQKRF LKSLIFYATA TLIVFYGLKT AIRNGDWQNE EMLYRSGIKV NPAKAWGNLG NVLKSQSKIS EAESAYRNAL YYRSNMADML YNLGLLLQEN SRFAEALHYY KLAIGSRPTL ASAYLNTGII LMNQRTEEA RRTFLKCSEI PDENLKDPHA HKSSVTSCLY NLGKLYHEQG HYEELSVYK EAIQKMPRQF APQSLYNMMG EAYMRLSKLP

Product Details

EAEHWYMESL RSKTDHIPAH LTYGKLLALT GRKSEAEKLF LKAIELDPTK GNCYMHYGQF
LLEEARLIEA AEMAKKAAEL DSTEFDVVFN AAHMLRQASL NEAAEKYYDL AARLRPNYPA
ALMNLGAILH LNGRLQKAEA NYLRALQLKP DDVITQSNLR KLWNIMEKQG LKTSKT

Characteristics: Human TMTC2 full-length ORF (NP_689801.1, 1 a.a. - 836 a.a.) recombinant protein with GST-tag at N-terminal.

Purification: in vitro wheat germ expression system

Target Details

Target: TMTC2

Alternative Name: TMTC2 ([TMTC2 Products](#))

Background: Full Gene Name: transmembrane and tetratricopeptide repeat containing 2
Synonyms: DKFZp762A217

Gene ID: 160335

NCBI Accession: [NM_152588](#)

Application Details

Application Notes: Optimal working dilution should be determined by the investigator.

Comment: Preparation method: in vitro, wheat germ expression system
Product Quality tested by: 12.5% SDS-PAGE Stained with Coomassie Blue.

Restrictions: For Research Use only

Handling

Buffer: 50 mM Tris-HCl, 10 mM reduced Glutathione, pH =8.0 in the elution buffer.

Handling Advice: Aliquot to avoid repeated freezing and thawing.

Storage: -80 °C

Storage Comment: Best use within three months from the date of receipt of this protein.

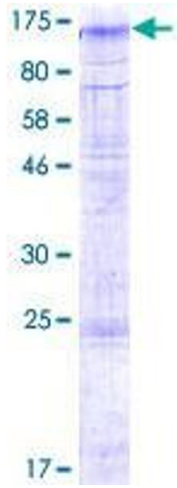


Image 1.