



[Go to Product page](#)

Datasheet for ABIN1323256

## TNIK Protein (AA 1-538) (GST tag)

### 1 Image

#### Overview

Quantity:	10 µg
Target:	TNIK
Protein Characteristics:	AA 1-538
Origin:	Human
Source:	Wheat germ
Protein Type:	Recombinant
Purification tag / Conjugate:	This TNIK protein is labelled with GST tag.
Application:	ELISA, Western Blotting (WB), Affinity Purification (AP), Antibody Array (AA)

#### Product Details

Purpose:	TNIK (Human) Recombinant Protein (P01)
Sequence:	MKKVTDYSSS SEESSESSEE EEDGESETHD GTVAVSDIPR LIPTGAPGSN EQYNVGMVGT HGLETSHADS FSGSISREGT LMIRETSGEK KRSGHSDSNG FAGHINLPDL VQQSHSPAGT PTEGLGRVST HSQEMDSGTE YGMGSSTKAS FTPFVDPVRY QTSPTDEDEE DEESSATALF TSELLRQEQA KLNEARKISV VNVNPTNIRP HSDTPEIRKY KKRFNSEILC AALWGVNLLV GTENGLMLLD RSGQGKVYNL INRRRFQQMD VLEGLNVLVT ISGKKNKLRV YYLSWLRNRI LHNDPEVEKK QGWITVGDLE GCIHYKVVKY ERIKFLVIAL KNAVEIYAWA PKPYHKFMAF KSFADLQHKP LLVDLTVEEG QRLKVIFGSH TGFHVIDVDS GNSYDIYIPS HIQGNITPHA IVILPKTDGM EMLVCYEDEG VYVNTYGRIT KDVVLQWGEM PTSVAYIHSN QIMGWGEKAI EIRSVETGHL DGVFMHKRAQ RLKFLCERNK KVFASVRSG GSSQVFFMTL NRNSMMNWW
Characteristics:	Human TNIK full-length ORF ( AAH55427.1, 1 a.a. - 538 a.a.) recombinant protein with GST-tag at N-terminal.

## Product Details

---

Purification: in vitro wheat germ expression system

## Target Details

---

Target: TNIK

Alternative Name: TNIK ([TNIK Products](#))

Background: Full Gene Name: TRAF2 and NCK interacting kinase  
Synonyms:

Gene ID: 23043

## Application Details

---

Application Notes: Optimal working dilution should be determined by the investigator.

Comment: Preparation method: in vitro, wheat germ expression system  
Product Quality tested by: 12.5% SDS-PAGE Stained with Coomassie Blue.

Restrictions: For Research Use only

## Handling

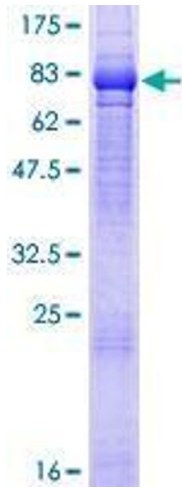
---

Buffer: 50 mM Tris-HCl, 10 mM reduced Glutathione, pH =8.0 in the elution buffer.

Handling Advice: Aliquot to avoid repeated freezing and thawing.

Storage: -80 °C

Storage Comment: Best use within three months from the date of receipt of this protein.



**Image 1.**