



[Go to Product page](#)

Datasheet for ABIN1323318

TOE1 Protein (AA 1-510) (GST tag)

1 Image

Overview

Quantity:	10 µg
Target:	TOE1
Protein Characteristics:	AA 1-510
Origin:	Human
Source:	Wheat germ
Protein Type:	Recombinant
Purification tag / Conjugate:	This TOE1 protein is labelled with GST tag.
Application:	ELISA, Western Blotting (WB), Affinity Purification (AP), Antibody Array (AA)

Product Details

Purpose:	TOE1 (Human) Recombinant Protein (P01)
Sequence:	MAADSDDGAV SAPAASDGGV SKSTTSGEEL VVQVPVVDVQ SNNFKEMWPS LLLAIKTANF VAVDTELSGL GDRKSLNQC IEERYKAVCH AARTRSILSL GLACFKRQPD KGEHSYLAQV FNLTLTCMEE YVIEPKSVQF LIQHGFNFNQ QYAQGIPYHK GNDKGDESQS QSVRTLFLLEL IRARRPLVLH NGLIDLFLY QNFYAHLPES LGTFTADLCE MFPAGIYDTK YAAEFHARFV ASYLEYAFRK CERENGKQRA AGSPHLTLEF CNYPSSMRDH IDYRCCLPPA THRPHTSIC DNFSAYGWCP LGPQCPQSHD IDLIIDTDEA AAEDKRRRRR RREKRKRALL NLPGTQTSGE AKDGPPKKQV CGDSIKPEET EQEVAADETR NLPHSKQGNK NDLEMGIKAA RPEIADRATS EVPGSQASPN PVPGDGLHRA GFDAFMTGYV MAYVEVSQGP QPCSSGPWLP ECHNKVYLSG KAVPLTVAKS QFSRSSKAHN QKMKLWGS
Characteristics:	Human TOE1 full-length ORF (AAH09364, 1 a.a. - 510 a.a.) recombinant protein with GST-tag at N-terminal.

Product Details

Purification: in vitro wheat germ expression system

Target Details

Target: TOE1

Alternative Name: TOE1 ([TOE1 Products](#))

Background: Full Gene Name: target of EGR1, member 1 (nuclear)
Synonyms: FLJ13949

Gene ID: 114034

Application Details

Application Notes: Optimal working dilution should be determined by the investigator.

Comment: Preparation method: in vitro, wheat germ expression system
Product Quality tested by: 12.5% SDS-PAGE Stained with Coomassie Blue.

Restrictions: For Research Use only

Handling

Buffer: 50 mM Tris-HCl, 10 mM reduced Glutathione, pH =8.0 in the elution buffer.

Handling Advice: Aliquot to avoid repeated freezing and thawing.

Storage: -80 °C

Storage Comment: Best use within three months from the date of receipt of this protein.

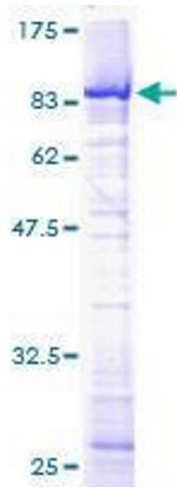


Image 1.