

Datasheet for ABIN1323326

TOM1L1 Protein (AA 1-346) (GST tag)



[Go to Product page](#)

1 Image

Overview

Quantity:	10 µg
Target:	TOM1L1
Protein Characteristics:	AA 1-346
Origin:	Human
Source:	Wheat germ
Protein Type:	Recombinant
Purification tag / Conjugate:	This TOM1L1 protein is labelled with GST tag.
Application:	ELISA, Western Blotting (WB), Affinity Purification (AP), Antibody Array (AA)

Product Details

Purpose:	TOM1L1 (Human) Recombinant Protein (P01)
Sequence:	MAFGKSHRDP YATSVGLHIE KATFAGVQTE DWGQFMHICD IINTTQDGPK DAVKALKKRI SKNYNHKEIQ LTLSLIDMCV QNCGPSFQSL IVKKEFVKEN LVKLLNPRYN LPLDIQNRIL NFIKTWSQGF PGGVDVSEVK EYVLDLVKKG VQFPPSEAEA ETARQETAQI SSNPPTSVP APALSSVIAP KNSTVTLVPE QIGKLHSELD MVKMNVRVMS AILMENTPGS ENHEDIELLQ KLYKTGREMQ ERIMDLLVVV ENEDVTVELI QVNEDLNNAI LGYERFTRNQ QRILEQKNQ KEATNTTSEP SAPSQDLLDL SPSRMPRAT LGELNTMNNQ LSGLSK
Characteristics:	Human TOM1L1 full-length ORF (AAH29396.1, 1 a.a. - 346 a.a.) recombinant protein with GST-tag at N-terminal.
Purification:	in vitro wheat germ expression system

Target Details

Target:	TOM1L1
Alternative Name:	TOM1L1 (TOM1L1 Products)
Background:	Full Gene Name: target of myb1 (chicken)-like 1 Synonyms: OK/KNS-CL.3, SRCASM
Gene ID:	10040

Application Details

Application Notes:	Optimal working dilution should be determined by the investigator.
Comment:	Preparation method: in vitro, wheat germ expression system Product Quality tested by: 12.5% SDS-PAGE Stained with Coomassie Blue.
Restrictions:	For Research Use only

Handling

Buffer:	50 mM Tris-HCl, 10 mM reduced Glutathione, pH =8.0 in the elution buffer.
Handling Advice:	Aliquot to avoid repeated freezing and thawing.
Storage:	-80 °C
Storage Comment:	Best use within three months from the date of receipt of this protein.

Images

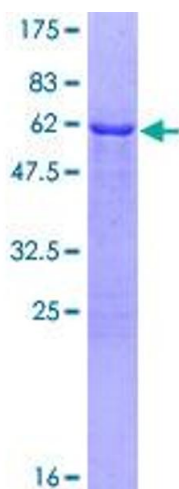


Image 1.