

Datasheet for ABIN1323353

**TOPBP1 Protein (AA 1327-1435) (GST tag)**[Go to Product page](#)**1** Image

## Overview

Quantity:	10 µg
Target:	TOPBP1
Protein Characteristics:	AA 1327-1435
Origin:	Human
Source:	Wheat germ
Protein Type:	Recombinant
Purification tag / Conjugate:	This TOPBP1 protein is labelled with GST tag.
Application:	Western Blotting (WB), ELISA, Affinity Purification (AP), Antibody Array (AA)

## Product Details

Purpose:	TOPBP1 (Human) Recombinant Protein (Q01)
Sequence:	LLQSGGAKVL PGHSVPLFKE ATHLFSDLNK LKPDDSGVNI AEAAAQNVYC LRTEYIADYL MQESPPIHVEN YCLPEAISFI QNNKELGTGL SQKRKAPTEK NKIKRPRVH
Characteristics:	Human TOPBP1 partial ORF ( NP_008958, 1327 a.a. - 1435 a.a.) recombinant protein with GST-tag at N-terminal.
Purification:	in vitro wheat germ expression system

## Target Details

Target:	TOPBP1
Alternative Name:	TOPBP1 ( <a href="#">TOPBP1 Products</a> )

## Target Details

Background:	Full Gene Name: topoisomerase (DNA) II binding protein 1 Synonyms: TOP2BP1
Gene ID:	11073
NCBI Accession:	<a href="#">NM_007027</a>
Pathways:	<a href="#">Chromatin Binding</a>

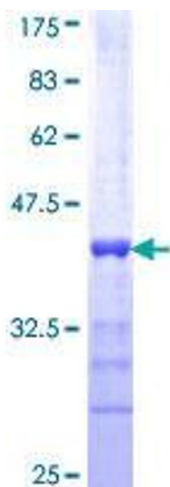
## Application Details

Application Notes:	Optimal working dilution should be determined by the investigator.
Comment:	Preparation method: in vitro, wheat germ expression system Product Quality tested by: 12.5% SDS-PAGE Stained with Coomassie Blue.
Restrictions:	For Research Use only

## Handling

Buffer:	50 mM Tris-HCl, 10 mM reduced Glutathione, pH =8.0 in the elution buffer.
Handling Advice:	Aliquot to avoid repeated freezing and thawing.
Storage:	-80 °C
Storage Comment:	Best use within three months from the date of receipt of this protein.

## Images



**Image 1.**