

Datasheet for ABIN1323373
TOX2 Protein (AA 1-464) (GST tag)



[Go to Product page](#)

1 Image

Overview

Quantity:	10 µg
Target:	TOX2
Protein Characteristics:	AA 1-464
Origin:	Human
Source:	Wheat germ
Protein Type:	Recombinant
Purification tag / Conjugate:	This TOX2 protein is labelled with GST tag.
Application:	ELISA, Western Blotting (WB), Affinity Purification (AP), Antibody Array (AA)

Product Details

Purpose:	C20orf100 (Human) Recombinant Protein (P01)
Sequence:	MSDGNPELLS TSQTYNGQSE NNEDYEIPPI TPPNLPEPSL LHLGDHEASY HSLCHGLTPN GLLPAYSYQA MDLPAIMVSN MLAQDSHLLS GQLPTIQEMV HSEVAAYDSG RPGPLLGRPA MLASHMSALS QSQLISQMG I RSSIAHSSPS PPGSKSATPS PSSSTQEEES EVHFKISGEK RPSADPGKKA KNPKKKKKKD PNEPQKPVSA YALFFRDTQA AIKQGNPSAT FGDVSKIVAS MWDSLGEQK QAYKRKTEAA KKEYLKALAA YRASLVSKSS PDQGETKSTQ ANPPAKMLPP KQPMYAMPGL ASFLTPSDLQ AFRSGASPAS LARTLGSKSL LPGLSASPPP PPSFPLSPTL HQQLSLPPHA QGALLSPPVS MSPAPQPPVL PTPMALQVQL AMSPSPGPQ DFPHISEFPPS SSGSCSPGPS NPTSSGDWDS SYPSGEGGIS TCSLLPRDKS LYLT
Characteristics:	Human C20orf100 full-length ORF (NP_116272.1, 1 a.a. - 464 a.a.) recombinant protein with GST-tag at N-terminal.

Product Details

Purification: in vitro wheat germ expression system

Target Details

Target: TOX2

Alternative Name: TOX2 ([TOX2 Products](#))

Background: Full Gene Name: TOX high mobility group box family member 2
Synonyms: C20orf100,GCX-1,MGC15880,dJ1108D11.2,dJ49503.1

Gene ID: 84969

NCBI Accession: [NM_032883](#)

Application Details

Application Notes: Optimal working dilution should be determined by the investigator.

Comment: Preparation method: in vitro, wheat germ expression system
Product Quality tested by: 12.5% SDS-PAGE Stained with Coomassie Blue.

Restrictions: For Research Use only

Handling

Buffer: 50 mM Tris-HCl, 10 mM reduced Glutathione, pH =8.0 in the elution buffer.

Handling Advice: Aliquot to avoid repeated freezing and thawing.

Storage: -80 °C

Storage Comment: Best use within three months from the date of receipt of this protein.

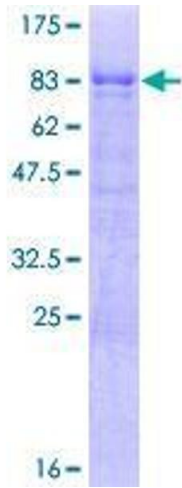


Image 1.