



[Go to Product page](#)

Datasheet for ABIN1323409

TPD52 Protein (AA 1-184) (GST tag)

1 Image

Overview

Quantity:	10 µg
Target:	TPD52
Protein Characteristics:	AA 1-184
Origin:	Human
Source:	Wheat germ
Protein Type:	Recombinant
Purification tag / Conjugate:	This TPD52 protein is labelled with GST tag.
Application:	ELISA, Western Blotting (WB), Antibody Array (AA), Affinity Purification (AP)

Product Details

Purpose:	TPD52 (Human) Recombinant Protein (P01)
Sequence:	MDRGEQGLLR TDPVPEEGED VAATISATET LSEEEQEELR RELAKVEEEI QTLSQVLAAK EKHLAEIKRK LGINSLQELK QNIAKGWQDV TATSAYKKTS ETLSQAGQKA SAAFSSVGSV ITKKLEDVKN SPTFKSFEEK VENLKSXVGG TKPAGGDFGE VLNSAANASA TTTEPLPEKT QESL
Characteristics:	Human TPD52 full-length ORF (AAH18117.1, 1 a.a. - 184 a.a.) recombinant protein with GST-tag at N-terminal.
Purification:	in vitro wheat germ expression system

Target Details

Target:	TPD52
Alternative Name:	TPD52 (TPD52 Products)

Target Details

Background: Full Gene Name: tumor protein D52
Synonyms: D52,N8L,PC-1,PrLZ,hD52

Gene ID: 7163

Application Details

Application Notes: Optimal working dilution should be determined by the investigator.

Comment: Preparation method: in vitro, wheat germ expression system
Product Quality tested by: 12.5% SDS-PAGE Stained with Coomassie Blue.

Restrictions: For Research Use only

Handling

Buffer: 50 mM Tris-HCl, 10 mM reduced Glutathione, pH =8.0 in the elution buffer.

Handling Advice: Aliquot to avoid repeated freezing and thawing.

Storage: -80 °C

Storage Comment: Best use within three months from the date of receipt of this protein.

Images

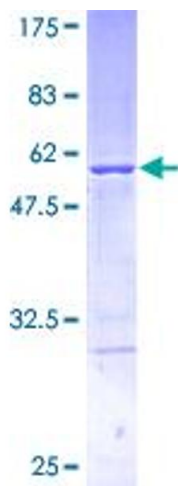


Image 1.