

Datasheet for ABIN1323420
TPD52L3 Protein (AA 1-140) (GST tag)



[Go to Product page](#)

1 Image

Overview

Quantity:	10 µg
Target:	TPD52L3
Protein Characteristics:	AA 1-140
Origin:	Human
Source:	Wheat germ
Protein Type:	Recombinant
Purification tag / Conjugate:	This TPD52L3 protein is labelled with GST tag.
Application:	ELISA, Western Blotting (WB), Antibody Array (AA), Affinity Purification (AP)

Product Details

Purpose:	TPD52L3 (Human) Recombinant Protein (P01)
Sequence:	MPHARTETSV GTYESHSTSE LEDLTEPEQR ELKTKLTKLE AEIVTLRHVL AAKERRCGEL KRKLGLTALV GLRQNLSKSW LDVQVSNTYV KQKTSALST MGTLICRKLK GVKKSATLRS FEGLMGTIKS KVSGGKRAWP
Characteristics:	Human TPD52L3 full-length ORF (NP_277051.3, 1 a.a. - 140 a.a.) recombinant protein with GST-tag at N-terminal.
Purification:	in vitro wheat germ expression system

Target Details

Target:	TPD52L3
Alternative Name:	TPD52L3 (TPD52L3 Products)

Target Details

Background:	Full Gene Name: tumor protein D52-like 3 Synonyms: MGC26757,MGC45374,NYD-SP25,hD55
Gene ID:	89882
NCBI Accession:	NM_033516

Application Details

Application Notes:	Optimal working dilution should be determined by the investigator.
Comment:	Preparation method: in vitro, wheat germ expression system Product Quality tested by: 12.5% SDS-PAGE Stained with Coomassie Blue.
Restrictions:	For Research Use only

Handling

Buffer:	50 mM Tris-HCl, 10 mM reduced Glutathione, pH =8.0 in the elution buffer.
Handling Advice:	Aliquot to avoid repeated freezing and thawing.
Storage:	-80 °C
Storage Comment:	Best use within three months from the date of receipt of this protein.

Images

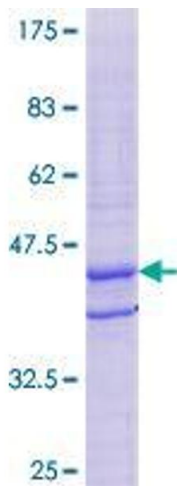


Image 1.