



[Go to Product page](#)

Datasheet for ABIN1323455

TPRG1L Protein (AA 1-213) (GST tag)

1 Image

Overview

Quantity:	25 µg
Target:	TPRG1L
Protein Characteristics:	AA 1-213
Origin:	Human
Source:	Wheat germ
Protein Type:	Recombinant
Purification tag / Conjugate:	This TPRG1L protein is labelled with GST tag.
Application:	ELISA, Western Blotting (WB), Antibody Array (AA), Affinity Purification (AP)

Product Details

Purpose:	FAM79A (Human) Recombinant Protein (P01)
Sequence:	MLQLRDSVDS AGTSPTAVLA AGEEVGAGGG PGGGRPGAGT PLRQTLWPLS IHDPTRRARV KEYFVFRPGS IEQAVEEIRV VVRPVEDGEI QGVWLLTERE GFGIRIQWDK QSRPSFINRW NPWSTNVPYA TFTEHPMAGA DEKTASLCQL ESFKALLIQA VKKAQKESPL PGQANGVLIL ERPLLIETYV GLMSFINNEA KLGYSMTRGK IGF
Characteristics:	Human FAM79A full-length ORF (AAH19034.1, 1 a.a. - 213 a.a.) recombinant protein with GST-tag at N-terminal.
Purification:	in vitro wheat germ expression system

Target Details

Target:	TPRG1L
---------	--------

Target Details

Alternative Name:	TPRG1L (TPRG1L Products)
Background:	Full Gene Name: tumor protein p63 regulated 1-like Synonyms: FAM79A,FLJ21811,RP11-46F15.3,h-mover,mover
Gene ID:	127262

Application Details

Application Notes:	Optimal working dilution should be determined by the investigator.
Comment:	Preparation method: in vitro, wheat germ expression system Product Quality tested by: 12.5% SDS-PAGE Stained with Coomassie Blue.
Restrictions:	For Research Use only

Handling

Buffer:	50 mM Tris-HCl, 10 mM reduced Glutathione, pH =8.0 in the elution buffer.
Handling Advice:	Aliquot to avoid repeated freezing and thawing.
Storage:	-80 °C
Storage Comment:	Best use within three months from the date of receipt of this protein.

Images

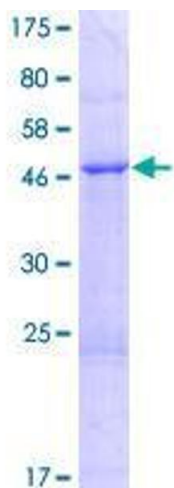


Image 1.