



[Go to Product page](#)

Datasheet for ABIN1323460

TPRX1 Protein (AA 313-411) (GST tag)

1 Image

Overview

Quantity:	10 µg
Target:	TPRX1
Protein Characteristics:	AA 313-411
Origin:	Human
Source:	Wheat germ
Protein Type:	Recombinant
Purification tag / Conjugate:	This TPRX1 protein is labelled with GST tag.
Application:	ELISA, Western Blotting (WB), Antibody Array (AA), Affinity Purification (AP)

Product Details

Purpose:	TPRX1 (Human) Recombinant Protein (Q01)
Sequence:	GSGSVPAPIP GPGSLPAPAP LWQSPDASD FLPDTQLFPH FTELLLPLDP LEGSSVSTMT SQYQEGDDSM GKKHSGSQPQ EEGGSVNENH SGPRLLLDL
Characteristics:	Human TPRX1 partial ORF (NP_940881.2, 313 a.a. - 411 a.a.) recombinant protein with GST tag at N-terminal.
Purification:	in vitro wheat germ expression system

Target Details

Target:	TPRX1
Alternative Name:	TPRX1 (TPRX1 Products)

Target Details

Background: Full Gene Name: tetra-peptide repeat homeobox 1
Synonyms: FLJ40321,TPRX

Gene ID: 284355

NCBI Accession: [NM_198479](#)

Application Details

Application Notes: Optimal working dilution should be determined by the investigator.

Comment: Preparation method: in vitro, wheat germ expression system
Product Quality tested by: 12.5% SDS-PAGE Stained with Coomassie Blue

Restrictions: For Research Use only

Handling

Buffer: 50 mM Tris-HCl, 10 mM reduced Glutathione, pH =8.0 in the elution buffer.

Handling Advice: Aliquot to avoid repeated freezing and thawing.

Storage: -80 °C

Storage Comment: Best use within three months from the date of receipt of this protein.

Images

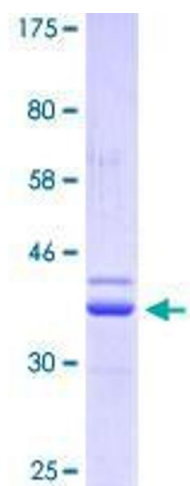


Image 1.