



[Go to Product page](#)

Datasheet for ABIN1323480

TCR alpha Protein (AA 1-278) (GST tag)

1 Image

Overview

Quantity:	10 µg
Target:	TCR alpha (TRA)
Protein Characteristics:	AA 1-278
Origin:	Human
Source:	Wheat germ
Protein Type:	Recombinant
Purification tag / Conjugate:	This TCR alpha protein is labelled with GST tag.
Application:	ELISA, Western Blotting (WB), Antibody Array (AA), Affinity Purification (AP)

Product Details

Purpose:	TRA (Human) Recombinant Protein (P01)
Sequence:	MAMLLGASVL ILWLQPDWVN SQQKNDDQQV KQNSPSLSVQ EGRISILNCD YTNSMFDYFL WYKKYPAEGP TFLISSIK DKNEDGRFTV FLNKS AKHLS LHIVPSQPGD SAVYFCAVRY NNNDMRFGAG TRLTVKPNIQ NPDPVYQLR DSKSSDKSVC LFTDFDSQTN VSQKSDSDVY ITDKTVLDMR SMDFKSNSAV AWSNKSDFAC ANAFNNSIIP EDTFFPSPES SCDVKLVEKS FETDTNLNFQ NLSVIGFRIL LLKVAGFNLL MTLRLWSS
Characteristics:	Human TRA full-length ORF (AAH71758.1, 1 a.a. - 278 a.a.) recombinant protein with GST-tag at N-terminal.
Purification:	in vitro wheat germ expression system

Target Details

Target:	TCR alpha (TRA)
Alternative Name:	TRA (TRA Products)
Background:	Full Gene Name: T cell receptor alpha locus Synonyms: FLJ22602,MGC117436,MGC22624,MGC23964,MGC71411,TCRA,TCRD,TRA
Gene ID:	6955

Application Details

Application Notes:	Optimal working dilution should be determined by the investigator.
Comment:	Preparation method: in vitro, wheat germ expression system Product Quality tested by: 12.5% SDS-PAGE Stained with Coomassie Blue.
Restrictions:	For Research Use only

Handling

Buffer:	50 mM Tris-HCl, 10 mM reduced Glutathione, pH =8.0 in the elution buffer.
Handling Advice:	Aliquot to avoid repeated freezing and thawing.
Storage:	-80 °C
Storage Comment:	Best use within three months from the date of receipt of this protein.

Images

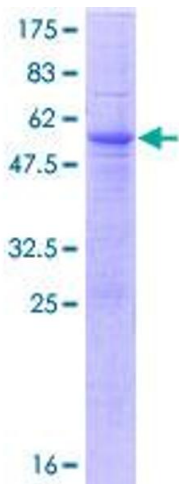


Image 1.