

Datasheet for ABIN1323482
TCR alpha Protein (AA 1-296) (GST tag)



[Go to Product page](#)

1 Image

Overview

Quantity:	25 µg
Target:	TCR alpha (TRA)
Protein Characteristics:	AA 1-296
Origin:	Human
Source:	Wheat germ
Protein Type:	Recombinant
Purification tag / Conjugate:	This TCR alpha protein is labelled with GST tag.
Application:	ELISA, Western Blotting (WB), Antibody Array (AA), Affinity Purification (AP)

Product Details

Purpose:	TRA (Human) Recombinant Protein (P02)
Sequence:	MLFSSLLCVF VAFSYSGSSV AQKVTQAQSS VSMPVRKAVT LNCLYETSWW SYYIFWYKQL PSKEMIFLIR QGSDEQNAKS GRYSVNFKKA AKSVALTISA LQLEDSAKYF CALGESFLPF RGNFHYTEKLF IFGKGTTRVTV EPRSQPHTKP SVFVMKNGTN VACLKVEFYP KDIRINLVSS KKITEFDPAI VISPSGKYNA VKLGKYEDSN SVTCSVQHDN KTVHSTDFEV KTDSTDHVKP KETENTKQPS KSCHKPKAIV HTEKVNMMSL TVLGLRMLFA KTVAVNFLT AKLFFL
Characteristics:	Human TRA full-length ORF (AAH22317.1, 1 a.a. - 296 a.a.) recombinant protein with GST-tag at N-terminal.
Purification:	in vitro wheat germ expression system

Target Details

Target:	TCR alpha (TRA)
Alternative Name:	TRA (TRA Products)
Background:	Full Gene Name: T cell receptor alpha locus Synonyms: FLJ22602,MGC117436,MGC22624,MGC23964,MGC71411,TCRA,TCRD,TRA
Gene ID:	6955

Application Details

Application Notes:	Optimal working dilution should be determined by the investigator.
Comment:	Preparation method: in vitro, wheat germ expression system Product Quality tested by: 12.5% SDS-PAGE Stained with Coomassie Blue.
Restrictions:	For Research Use only

Handling

Buffer:	50 mM Tris-HCl, 10 mM reduced Glutathione, pH =8.0 in the elution buffer.
Handling Advice:	Aliquot to avoid repeated freezing and thawing.
Storage:	-80 °C
Storage Comment:	Best use within three months from the date of receipt of this protein.

Images

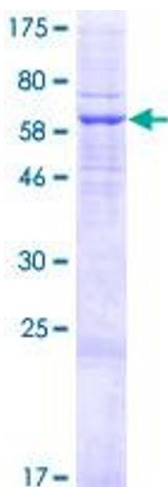


Image 1.