

Datasheet for ABIN1323538
TRAPPC10 Protein (AA 1162-1257) (GST tag)



[Go to Product page](#)

1 Image

Overview

Quantity:	10 µg
Target:	TRAPPC10 (TMEM1)
Protein Characteristics:	AA 1162-1257
Origin:	Human
Source:	Wheat germ
Protein Type:	Recombinant
Purification tag / Conjugate:	This TRAPPC10 protein is labelled with GST tag.
Application:	Western Blotting (WB), ELISA, Antibody Array (AA), Affinity Purification (AP)

Product Details

Purpose:	TMEM1 (Human) Recombinant Protein (Q01)
Sequence:	VRLFKYLP HH SAHSSQLDAD SWIENDSLSV DKHGDDQPDS SSLKSRGSVH SACSSEHKGL PMPRLQALPA GQVFNSSSGT QVLVIPSQDD HVLEVS
Characteristics:	Human TMEM1 partial ORF (NP_003265, 1162 a.a. - 1257 a.a.) recombinant protein with GST-tag at N-terminal.
Purification:	in vitro wheat germ expression system

Target Details

Target:	TRAPPC10 (TMEM1)
Alternative Name:	TRAPPC10 (TMEM1 Products)

Target Details

Background:	Full Gene Name: trafficking protein particle complex 10 Synonyms: EHOC- 1,EHOC1,FLJ54223,FLJ54817,FLJ55683,GT334,MGC126777,TMEM1,TRS130,TRS30
Gene ID:	7109
NCBI Accession:	NM_003274

Application Details

Application Notes:	Optimal working dilution should be determined by the investigator.
Comment:	Preparation method: in vitro, wheat germ expression system Product Quality tested by: 12.5% SDS-PAGE Stained with Coomassie Blue.
Restrictions:	For Research Use only

Handling

Buffer:	50 mM Tris-HCl, 10 mM reduced Glutathione, pH =8.0 in the elution buffer.
Handling Advice:	Aliquot to avoid repeated freezing and thawing.
Storage:	-80 °C
Storage Comment:	Best use within three months from the date of receipt of this protein.

Images

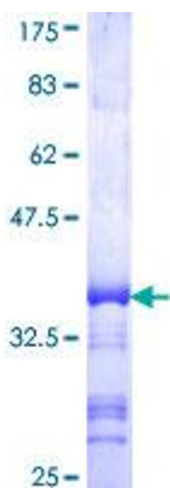


Image 1.