



[Go to Product page](#)

Datasheet for ABIN1323576

## TRERF1 Protein (AA 2-90) (GST tag)

### 1 Image

#### Overview

Quantity:	10 µg
Target:	TRERF1
Protein Characteristics:	AA 2-90
Origin:	Human
Source:	Wheat germ
Protein Type:	Recombinant
Purification tag / Conjugate:	This TRERF1 protein is labelled with GST tag.
Application:	Western Blotting (WB), ELISA, Antibody Array (AA), Affinity Purification (AP)

#### Product Details

Purpose:	TRERF1 (Human) Recombinant Protein (Q01)
Sequence:	AQVLHTQSAV MDGAPDSALR QLLSQKPMEP PAPAIPSRYSYQ QVPQQPHPGF TGGLSKPALQ VGQHPTQGHL YYDYQQPLAQ VPVQGGQPL
Characteristics:	Human TRERF1 partial ORF (NP_060885.1, 2 a.a. - 90 a.a.) recombinant protein with GST-tag at N-terminal.
Purification:	in vitro wheat germ expression system

#### Target Details

Target:	TRERF1
Alternative Name:	TRERF1 ( <a href="#">TRERF1 Products</a> )

## Target Details

Background:	Full Gene Name: transcriptional regulating factor 1 Synonyms: BCAR2,FLJ21198,HSA277276,RAPA,RP1-139D8.5,TReP-132,dJ139D8.5
Gene ID:	55809
NCBI Accession:	<a href="#">NM_018415</a>
Pathways:	<a href="#">Regulation of Hormone Metabolic Process</a> , <a href="#">Regulation of Hormone Biosynthetic Process</a> , <a href="#">Chromatin Binding</a>

## Application Details

Application Notes:	Optimal working dilution should be determined by the investigator.
Comment:	Preparation method: in vitro, wheat germ expression system Product Quality tested by: 12.5% SDS-PAGE Stained with Coomassie Blue
Restrictions:	For Research Use only

## Handling

Buffer:	50 mM Tris-HCl, 10 mM reduced Glutathione, pH =8.0 in the elution buffer.
Handling Advice:	Aliquot to avoid repeated freezing and thawing.
Storage:	-80 °C
Storage Comment:	Best use within three months from the date of receipt of this protein.

## Images

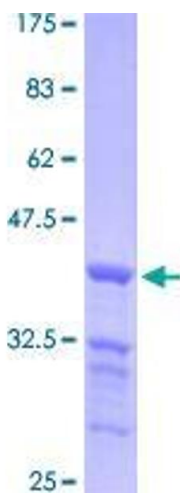


Image 1.