



[Go to Product page](#)

Datasheet for ABIN1323609

## TRIM15 Protein (AA 1-465) (GST tag)

### 1 Image

#### Overview

Quantity:	10 µg
Target:	TRIM15
Protein Characteristics:	AA 1-465
Origin:	Human
Source:	Wheat germ
Protein Type:	Recombinant
Purification tag / Conjugate:	This TRIM15 protein is labelled with GST tag.
Application:	ELISA, Western Blotting (WB), Antibody Array (AA), Affinity Purification (AP)

#### Product Details

Purpose:	TRIM15 (Human) Recombinant Protein (P01)
Sequence:	MPATPSLKVV HELPACTLCA GPLEDAVTIP CGHTFCRLCL PALSQMGAQS SGKILLCPLC QEEEAETPM APVPLGPLGE TYCEEHGEKI YFFCENDAEF LCVFCREGPT HQAHTVGFLD EAIQPYRDRL RSRLEALSTE RDEIEDVKCQ EDQKLQVLLT QIESKKHQVE TAFERLQQEL EQQRCLLLAR LRELEQQIWK ERDEYITKVS EEVTRLGAQV KELEEKCCQP ASELLQDVRV NQSRCEMKTFSPEAISPDL VKKIRDFHRK ILTLPEMMRM FSENLAHHLE IDSGVITLDP QTASRSLVLS EDRKSVRYTR QKKNLPDSPL RFDGLPAVLG FPGFSSGRHR WQVDLQLGDG GGCTVGVAGE GVRKGGEMGL SAEDGVWAVI ISHQQCWAST SPGTDLPLSE IPRGVRVALD YEAGQVTLHN AQTQEPIFTF TASFSGKVFP FFAVWKKGSC LTLKG
Characteristics:	Human TRIM15 full-length ORF ( AAH38585.1, 1 a.a. - 465 a.a.) recombinant protein with GST-tag at N-terminal.

## Product Details

---

Purification: in vitro wheat germ expression system

## Target Details

---

Target: TRIM15

Alternative Name: TRIM15 ([TRIM15 Products](#))

Background: Full Gene Name: tripartite motif-containing 15  
Synonyms: RNF93,ZNF178,ZNFB7

Gene ID: 89870

## Application Details

---

Application Notes: Optimal working dilution should be determined by the investigator.

Comment: Preparation method: in vitro, wheat germ expression system  
Product Quality tested by: 12.5% SDS-PAGE Stained with Coomassie Blue.

Restrictions: For Research Use only

## Handling

---

Buffer: 50 mM Tris-HCl, 10 mM reduced Glutathione, pH =8.0 in the elution buffer.

Handling Advice: Aliquot to avoid repeated freezing and thawing.

Storage: -80 °C

Storage Comment: Best use within three months from the date of receipt of this protein.

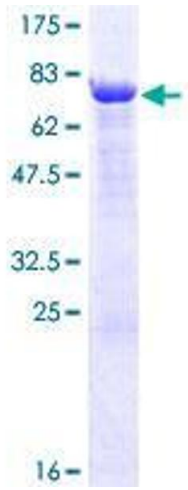


Image 1.