



[Go to Product page](#)

Datasheet for ABIN1323624

TRIM22 Protein (AA 1-498) (GST tag)

1 Image

Overview

Quantity:	10 µg
Target:	TRIM22
Protein Characteristics:	AA 1-498
Origin:	Human
Source:	Wheat germ
Protein Type:	Recombinant
Purification tag / Conjugate:	This TRIM22 protein is labelled with GST tag.
Application:	ELISA, Western Blotting (WB), Affinity Purification (AP), Antibody Array (AA)

Product Details

Purpose:	TRIM22 (Human) Recombinant Protein (P01)
Sequence:	MDFSVKVDIE KEVTCPCICLE LLTEPLSLDC GHSFCQACIT AKIKESVIIS RGESSCPVCQ TRFQPGNLRP NRHLANIVER VKEVKMSPQE GQKRDVCEHH GKQLQIFCKE DGKVICWVCE LSQEHQGHQT FRINEVVKEC QEKLQVALQR LIKEDQEA EK LEDDIRQERT AWKNYIQIER QKILKGFNEM RVILDNEEQR ELQKLEEGEV NVLDNLAAAT DQLVQQRQDA STLISDLQRR LRGSSVEMLQ DVIDVMKRSE SWTLKKPKSV SKKLKSVFRV PDLGMLQVL KELTDVQYYW VDVMLNPGSA TSNVAISVDQ RQVKTVRTCT FKNSNPCDFS AFGVFGCQYF SSGKYYWEVD VSGKIAWILG VHSKISSLNK RKSSGFADFDP SVNYSKVYSR YRPQYGYWVI GLQNTCEYNA FEDSSSSDPK VLTLFMAVPP CRIGVFLDYE AGIVSFFNVT NHGALIYKFS GCRFSRPAYP YFNPWNCLVP MTVCPSS
Characteristics:	Human TRIM22 full-length ORF (NP_006065.2, 1 a.a. - 498 a.a.) recombinant protein with GST-tag at N-terminal.

Product Details

Purification: in vitro wheat germ expression system

Target Details

Target: TRIM22

Alternative Name: TRIM22 ([TRIM22 Products](#))

Background: Full Gene Name: tripartite motif-containing 22
Synonyms: GPSTAF50,RNF94,STAF50

Gene ID: 10346

NCBI Accession: [NM_006074](#)

Application Details

Application Notes: Optimal working dilution should be determined by the investigator.

Comment: Preparation method: in vitro, wheat germ expression system
Product Quality tested by: 12.5% SDS-PAGE Stained with Coomassie Blue.

Restrictions: For Research Use only

Handling

Buffer: 50 mM Tris-HCl, 10 mM reduced Glutathione, pH =8.0 in the elution buffer.

Handling Advice: Aliquot to avoid repeated freezing and thawing.

Storage: -80 °C

Storage Comment: Best use within three months from the date of receipt of this protein.

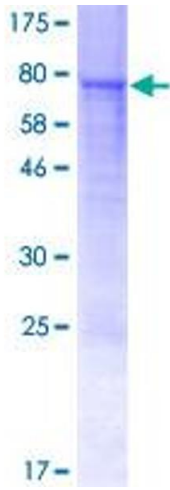


Image 1.