

Datasheet for ABIN1323650  
**TRIM31 Protein (AA 1-425) (GST tag)**



[Go to Product page](#)

1 Image

## Overview

Quantity:	10 µg
Target:	TRIM31
Protein Characteristics:	AA 1-425
Origin:	Human
Source:	Wheat germ
Protein Type:	Recombinant
Purification tag / Conjugate:	This TRIM31 protein is labelled with GST tag.
Application:	ELISA, Western Blotting (WB), Antibody Array (AA), Affinity Purification (AP)

## Product Details

Purpose:	TRIM31 (Human) Recombinant Protein (P01)
Sequence:	MASGQFVNKL QEEVICPICL DILQKPVTID CGHNFCLKCI TQIGETSCGF FKCP LCKTSV RKNAIRFNSL LRNLVEKIQA LQASEVQSKR KEATCPRHQE MFHYFCEDDG KFLCFVCRES KDHKSHNVSL IEEAAQNYQG QIQEQIQLVQ QKEKETVQVK AQGVHRVDVF TDQVEHEKQR ILTEFELLHQ VLEEEKNFLL SRIYWLGHEG TEAGKHVVAS TEPQLNDLKK LVDSLKTKQN MPPRQLLEDI KVVLCRSEEF QFLNPTVPL ELEKKLSEAK SRHDSITGSL KFKDQLQAD RKKDENRFFK SMNKNDMKSW GLLQKNNHKM NKTSEPGSSS AGGRTTSGPP NHHSSAPSHS LFRASSAGKV TFPVCLASY DEISGQGASS QDTKTFDVAL SEELHAALSE WLTAIRAWFC KVPSS
Characteristics:	Human TRIM31 full-length ORF ( AAH17017.1, 1 a.a. - 425 a.a.) recombinant protein with GST-tag at N-terminal.
Purification:	in vitro wheat germ expression system

## Target Details

Target:	TRIM31
Alternative Name:	TRIM31 ( <a href="#">TRIM31 Products</a> )
Background:	Gene: tripartite motif-containing 31 Synonyms: C6orf13, HCG1, HCGI, RNF
Gene ID:	11074

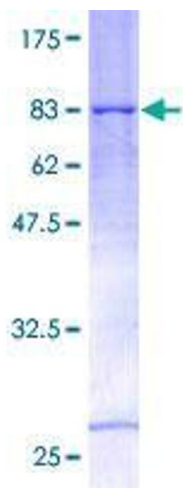
## Application Details

Application Notes:	Optimal working dilution should be determined by the investigator.
Restrictions:	For Research Use only

## Handling

Buffer:	50 mM Tris-HCl, 10 mM reduced Glutathione, pH =8.0 in the elution buffer.
Handling Advice:	Aliquot to avoid repeated freezing and thawing.
Storage:	-80 °C
Storage Comment:	Best use within three months from the date of receipt of this protein.

## Images



**Image 1.**