



[Go to Product page](#)

Datasheet for ABIN1323681

TRIM40 Protein (AA 1-258) (GST tag)

1 Image

Overview

Quantity:	10 µg
Target:	TRIM40
Protein Characteristics:	AA 1-258
Origin:	Human
Source:	Wheat germ
Protein Type:	Recombinant
Purification tag / Conjugate:	This TRIM40 protein is labelled with GST tag.
Application:	ELISA, Western Blotting (WB), Antibody Array (AA), Affinity Purification (AP)

Product Details

Purpose:	TRIM40 (Human) Recombinant Protein (P01)
Sequence:	MIPLQKDNQE EGVCPICQES LKEAVSTNCG HLCRVCLTQ HVEKASASGV FCCPLCRKPC SEEVLTGYI CPNHQKRVC R FCEESRLLLC VECLVSPEHM SHHELTIANA LSHYKERLNR RSRKLKRDIA ELQRLKAQQE KKLQALQFQV DHGNHRLEAG PESQHQTREQ LGALPQQWLG QLEHMPAEAA RILDISRAVT QLRSLVIDLE RTAKELDTNT LKNAGDLLNR SAPQKLEVIY PQLEKGVSEL LLQPPQKL
Characteristics:	Human TRIM40 full-length ORF (AAH60785.1, 1 a.a. - 258 a.a.) recombinant protein with GST-tag at N-terminal.
Purification:	in vitro wheat germ expression system

Target Details

Target:	TRIM40
Alternative Name:	TRIM40 (TRIM40 Products)
Background:	Full Gene Name: tripartite motif-containing 40 Synonyms: RNF35
Gene ID:	135644

Application Details

Application Notes:	Optimal working dilution should be determined by the investigator.
Comment:	Preparation method: in vitro, wheat germ expression system Product Quality tested by: 12.5% SDS-PAGE Stained with Coomassie Blue.
Restrictions:	For Research Use only

Handling

Buffer:	50 mM Tris-HCl, 10 mM reduced Glutathione, pH =8.0 in the elution buffer.
Handling Advice:	Aliquot to avoid repeated freezing and thawing.
Storage:	-80 °C
Storage Comment:	Best use within three months from the date of receipt of this protein.

Images

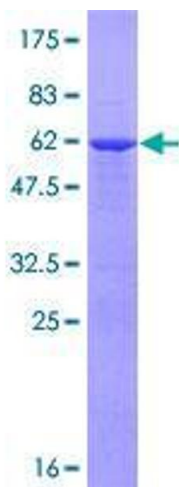


Image 1.