



[Go to Product page](#)

Datasheet for ABIN1323684

TRIM43 Protein (AA 1-446) (GST tag)

1 Image

Overview

Quantity:	10 µg
Target:	TRIM43
Protein Characteristics:	AA 1-446
Origin:	Human
Source:	Wheat germ
Protein Type:	Recombinant
Purification tag / Conjugate:	This TRIM43 protein is labelled with GST tag.
Application:	ELISA, Western Blotting (WB), Antibody Array (AA), Affinity Purification (AP)

Product Details

Purpose:	TRIM43 (Human) Recombinant Protein (P01)
Sequence:	MDSDFSHAFQ KELTCVICLN YLVDPVTICC GHSFCRPCLC LSWEEAQSPA NCPACREPSK KMDFKTNILL KNLVTIARKA SLWQFLSSEK QICGTHRQTK KMFCDMDKSL LCLLCSNSQE HGAHKHHPIE EAAEEHREKL LKQMRILWKK IQENQRNLYE EGRTAFLWRG NVVLAQVMIR NEYRKLHPVL HKEEKQHLEK LNKEYQEIFQ QLQRSWVKMD QKSKHLKEMY QELMEMCHKP DVELLQDLGD IVARSESVLL HMPQPVNPEL TAGPITGLVY RLNRFRVEIS FHFVETNHNI RLFEDVRSWM FRRGPLNSDR SDYFAAWGAR VFSFGKHYWE LDVDNSCDWA LGVCNNSWIR KNSTMVNSEK IFLLCLKVD NHFNLLTTSP VFPHYIEKPL GRVGVFLDFE SGSVSFLNVT KSSLIWSYPA GSLTFPVRPF FYTGHR
Characteristics:	Human TRIM43 full-length ORF (AAH15353, 1 a.a. - 446 a.a.) recombinant protein with GST-tag at N-terminal.

Product Details

Purification: in vitro wheat germ expression system

Target Details

Target: TRIM43

Alternative Name: TRIM43 ([TRIM43 Products](#))

Background: Full Gene Name: tripartite motif-containing 43
Synonyms:

Gene ID: 129868

Application Details

Application Notes: Optimal working dilution should be determined by the investigator.

Comment: Preparation method: in vitro, wheat germ expression system
Product Quality tested by: 12.5% SDS-PAGE Stained with Coomassie Blue.

Restrictions: For Research Use only

Handling

Buffer: 50 mM Tris-HCl, 10 mM reduced Glutathione, pH =8.0 in the elution buffer.

Handling Advice: Aliquot to avoid repeated freezing and thawing.

Storage: -80 °C

Storage Comment: Best use within three months from the date of receipt of this protein.

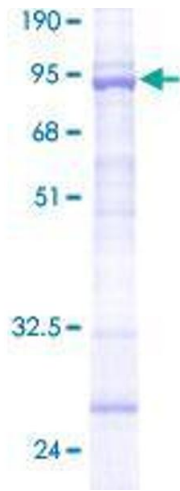


Image 1.