

Datasheet for ABIN1323696

TRIM48 Protein (AA 1-208) (GST tag)



[Go to Product page](#)

1 Image

Overview

Quantity:	10 µg
Target:	TRIM48
Protein Characteristics:	AA 1-208
Origin:	Human
Source:	Wheat germ
Protein Type:	Recombinant
Purification tag / Conjugate:	This TRIM48 protein is labelled with GST tag.
Application:	ELISA, Western Blotting (WB), Antibody Array (AA), Affinity Purification (AP)

Product Details

Purpose:	TRIM48 (Human) Recombinant Protein (P01)
Sequence:	MNSGISQVFQ RELTCPICMN YFIDPVTIDC GHSFCRPCFY LNWQDIPILT QCFEICKTIQ QRNLKTNIRL KKMASLARKA SLWLFLSSEE QMCGIHRETK KMFCEVDRSL LCLLCSSSQE HRYHRHCPAE WAAEEHWKEL LKKMQSLWEK ACENQRNLNV ETTRISHWKA FGDILYRSES VLLHMPQPLN LALRAGPITG LRDRLNQF
Characteristics:	Human TRIM48 full-length ORF (NP_077019.1, 1 a.a. - 208 a.a.) recombinant protein with GST-tag at N-terminal.
Purification:	in vitro wheat germ expression system

Target Details

Target:	TRIM48
---------	--------

Target Details

Alternative Name:	TRIM48 (TRIM48 Products)
Background:	Full Gene Name: tripartite motif-containing 48 Synonyms: MGC4827,RNF101
Gene ID:	79097
NCBI Accession:	NM_024114

Application Details

Application Notes:	Optimal working dilution should be determined by the investigator.
Comment:	Preparation method: in vitro, wheat germ expression system Product Quality tested by: 12.5% SDS-PAGE Stained with Coomassie Blue.
Restrictions:	For Research Use only

Handling

Buffer:	50 mM Tris-HCl, 10 mM reduced Glutathione, pH =8.0 in the elution buffer.
Handling Advice:	Aliquot to avoid repeated freezing and thawing.
Storage:	-80 °C
Storage Comment:	Best use within three months from the date of receipt of this protein.

Images

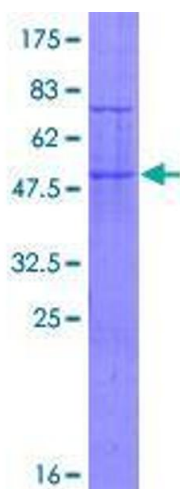


Image 1.