



[Go to Product page](#)

Datasheet for ABIN1323737

TRIM65 Protein (AA 1-517) (GST tag)

1 Image

Overview

Quantity:	10 µg
Target:	TRIM65
Protein Characteristics:	AA 1-517
Origin:	Human
Source:	Wheat germ
Protein Type:	Recombinant
Purification tag / Conjugate:	This TRIM65 protein is labelled with GST tag.
Application:	ELISA, Western Blotting (WB), Antibody Array (AA), Affinity Purification (AP)

Product Details

Purpose:	TRIM65 (Human) Recombinant Protein (P01)
Sequence:	<p>MAAQLLEEKL TCAICLGLYQ DPVTLP CGHN FCGACIRDWW DR CGKACPEC REPFPDGAEL</p> <p>RRNVALSGVL EVVRAGPARD PGPDPGPGPD PAARCPRHGR PLELFCRTEG RCVCSVCTVR</p> <p>ECRLHERALL DAERLKREAQ LRASLEVTQQ QATQAEGQLL ELRKQSSQIQ NSACILASWV</p> <p>SGKFSSLLQA LEIQHTTALR SIEVAKTQAL AQARDEEQRL RGHLEAVARH GCRIRELLEQ</p> <p>VDEQTF LQES QLLQPPGPLG PLTPLQWDED QQLGDLKQLL SRLCGLLLEE GSHPGAPAKP</p> <p>VDLAPVEAPG PLAPVPSTVC PLRRKLWQNY RNLT FDPVSA NRHFYLSRQD QQVKHCRQSR</p> <p>GPGGPGSFEL WQVQCAQSFQ AGHHYWEVRA SDHSVTLGVS YPQLPRCRLG PHTDNIGRGP</p> <p>CSWG LCVQED SLQAWHNGEA QRLPGVSGRL LGMDLDLASG CLTFYSLEPQ TQPLYTFHAL</p> <p>FNQPLTPVFW LLEGRTLTL C HQPGAVFPPG PQEEVLS</p>
Characteristics:	Human TRIM65 full-length ORF (AAH21259.2, 1 a.a. - 517 a.a.) recombinant protein with GST-tag at N-terminal.

Product Details

Purification: in vitro wheat germ expression system

Target Details

Target: TRIM65

Alternative Name: TRIM65 ([TRIM65 Products](#))

Background: Full Gene Name: tripartite motif-containing 65
Synonyms: 4732463G12Rik

Gene ID: 201292

Application Details

Application Notes: Optimal working dilution should be determined by the investigator.

Comment: Preparation method: in vitro, wheat germ expression system
Product Quality tested by: 12.5% SDS-PAGE Stained with Coomassie Blue.

Restrictions: For Research Use only

Handling

Buffer: 50 mM Tris-HCl, 10 mM reduced Glutathione, pH =8.0 in the elution buffer.

Handling Advice: Aliquot to avoid repeated freezing and thawing.

Storage: -80 °C

Storage Comment: Best use within three months from the date of receipt of this protein.

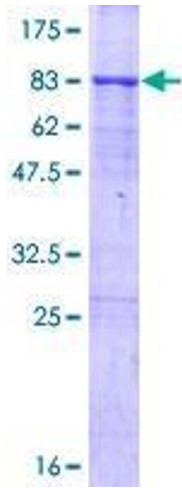


Image 1.