



[Go to Product page](#)

Datasheet for ABIN1323770

TRIP10 Protein (AA 1-545) (GST tag)

1 Image

Overview

Quantity:	10 µg
Target:	TRIP10
Protein Characteristics:	AA 1-545
Origin:	Human
Source:	Wheat germ
Protein Type:	Recombinant
Purification tag / Conjugate:	This TRIP10 protein is labelled with GST tag.
Application:	ELISA, Western Blotting (WB), Antibody Array (AA), Affinity Purification (AP)

Product Details

Purpose:	TRIP10 (Human) Recombinant Protein (P01)
Sequence:	MDWGTTELWDQ FEVLERHTQW GLDLLDRYVK FVKERTEVEQ AYAKQLRSLV KKYLPKRPAK DDPESKFSQQ QSFVQILQEV NDFAGQRELV AENLSVRVCL ELTKYSQEMK QERKMHFQEG RRAQQQLENG FKQLENSKRK FERDCREAEK AAQTAERLDQ DINATKADVE KAKQQAHLRS HMAEESKNEY AAQLQRFNRD QAHFYFSQMP QIFDKLQDMD ERRATRLGAG YGLLSEAELE VVPPIAKCLE GMKVAANAVID PKNDSHVLI LHKSGFARPG DVEFEDFSQP MNRAPSDSSL GTPSDGRPEL RGPGRSRTKR WPFGKKNKTV VTEDFSHLPP EQQRKRLQQQ LEERSRELQK EVDQREALKK MKDVYEKTPQ MGD PASLEPQ IAETLSNIER LKLEVQKYEA WLAEAESRVL SNRGDSL SRH ARPPDPPASA PPDSSSNSAS QDTKESSEEP PSEESQDTPY YTEFDEDFEE EPTSPIGHCV AIYHFEGSSE GTISMAEGED LSLMEEDKGD GWTRVRRKEG GEGYVPTSYL RVTLN
Characteristics:	Human TRIP10 full-length ORF (NP_004231.1, 1 a.a. - 545 a.a.) recombinant protein with GST-tag at N-terminal.

Product Details

Purification: in vitro wheat germ expression system

Target Details

Target: TRIP10

Alternative Name: TRIP10 ([TRIP10 Products](#))

Background: Full Gene Name: thyroid hormone receptor interactor 10
Synonyms: CIP4,HSTP,STOT,STP

Gene ID: 9322

NCBI Accession: [NM_004240](#)

Application Details

Application Notes: Optimal working dilution should be determined by the investigator.

Comment: Preparation method: in vitro, wheat germ expression system
Product Quality tested by: 12.5% SDS-PAGE Stained with Coomassie Blue.

Restrictions: For Research Use only

Handling

Buffer: 50 mM Tris-HCl, 10 mM reduced Glutathione, pH =8.0 in the elution buffer.

Handling Advice: Aliquot to avoid repeated freezing and thawing.

Storage: -80 °C

Storage Comment: Best use within three months from the date of receipt of this protein.

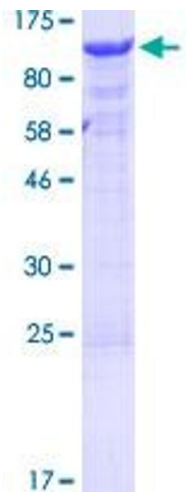


Image 1.