

Datasheet for ABIN1323776
TRIP12 Protein (AA 1-110) (GST tag)



[Go to Product page](#)

1 Image

Overview

Quantity:	10 µg
Target:	TRIP12
Protein Characteristics:	AA 1-110
Origin:	Human
Source:	Wheat germ
Protein Type:	Recombinant
Purification tag / Conjugate:	This TRIP12 protein is labelled with GST tag.
Application:	Antibody Array (AA), Affinity Purification (AP), ELISA, Western Blotting (WB)

Product Details

Purpose:	TRIP12 (Human) Recombinant Protein (Q01)
Sequence:	MSNRPNNNPG GSLRRSQRNT AGAQPQDDSI GGRSCSSSSA VIVPQPEDPD RANTSERQKT GQVPPKDNSR GVKRSASPDY NRTNSPSSAK KPKALQHTES PSETNKPHSK
Characteristics:	Human TRIP12 partial ORF (NP_004229, 1 a.a. - 110 a.a.) recombinant protein with GST-tag at N-terminal.
Purification:	in vitro wheat germ expression system

Target Details

Target:	TRIP12
Alternative Name:	TRIP12 (TRIP12 Products)

Target Details

Background:	Full Gene Name: thyroid hormone receptor interactor 12 Synonyms: KIAA0045,MGC138849,MGC138850
Gene ID:	9320
NCBI Accession:	NM_004238
Pathways:	Nuclear Hormone Receptor Binding

Application Details

Application Notes:	Optimal working dilution should be determined by the investigator.
Comment:	Preparation method: in vitro, wheat germ expression system Product Quality tested by: 12.5% SDS-PAGE Stained with Coomassie Blue.
Restrictions:	For Research Use only

Handling

Buffer:	50 mM Tris-HCl, 10 mM reduced Glutathione, pH =8.0 in the elution buffer.
Handling Advice:	Aliquot to avoid repeated freezing and thawing.
Storage:	-80 °C
Storage Comment:	Best use within three months from the date of receipt of this protein.

Images

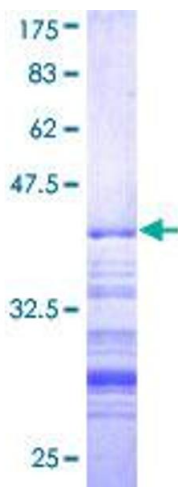


Image 1.