



[Go to Product page](#)

Datasheet for ABIN1323778

TRIP13 Protein (AA 1-432) (GST tag)

1 Image

Overview

Quantity:	10 µg
Target:	TRIP13
Protein Characteristics:	AA 1-432
Origin:	Human
Source:	Wheat germ
Protein Type:	Recombinant
Purification tag / Conjugate:	This TRIP13 protein is labelled with GST tag.
Application:	ELISA, Western Blotting (WB), Antibody Array (AA), Affinity Purification (AP)

Product Details

Purpose:	TRIP13 (Human) Recombinant Protein (P01)
Sequence:	MDEAVGDLKQ ALPCVAESPT VHVEVHQRGS STAKKEDINL SVRKLLNRHN IVFGDYTWTE FDEPFLTRNV QSVSIIDTEL KVKDSQPIDL SACTVALHIF QLNEDGPSSE NLEEETENII AANHWWLPAA EFHGLWDSLVDYVEVKSHLL DYVMTLLFS DKNVNSNLIT WNRVLLHGP PGTGKTSLCK ALAQKLTIRL SSRYRYGQLI EINSHSLFSK WFSESGKLVK KMFQKIQDLI DDKDALVFVL IDEVESLTAA RNACRAGTEP SDAIRVVNAV LTQIDQIKRH SNVVILTTSN ITEKIDVAFV DRADIKQYIG PPSAAAIFKI YLSCLEELMK CQIYPRQQL LTLRELEMIG FIENNVSKLS LLLNDISRKS EGLSGRVLRK LPFLAHALYV QAPTVTIEGF LQALSLAVDK QFEERKKLAA YI
Characteristics:	Human TRIP13 full-length ORF (AAH00404, 1 a.a. - 432 a.a.) recombinant protein with GST-tag at N-terminal.
Purification:	in vitro wheat germ expression system

Target Details

Target:	TRIP13
Alternative Name:	TRIP13 (TRIP13 Products)
Background:	Full Gene Name: thyroid hormone receptor interactor 13 Synonyms: 16E1BP
Gene ID:	9319

Application Details

Application Notes:	Optimal working dilution should be determined by the investigator.
Comment:	Preparation method: in vitro, wheat germ expression system Product Quality tested by: 12.5% SDS-PAGE Stained with Coomassie Blue.
Restrictions:	For Research Use only

Handling

Buffer:	50 mM Tris-HCl, 10 mM reduced Glutathione, pH =8.0 in the elution buffer.
Handling Advice:	Aliquot to avoid repeated freezing and thawing.
Storage:	-80 °C
Storage Comment:	Best use within three months from the date of receipt of this protein.

Images

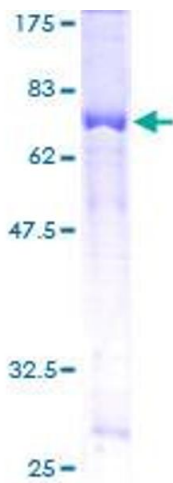


Image 1.