



[Go to Product page](#)

Datasheet for ABIN1323780

TRIP4 Protein (AA 1-581) (GST tag)

1 Image

Overview

Quantity:	10 µg
Target:	TRIP4
Protein Characteristics:	AA 1-581
Origin:	Human
Source:	Wheat germ
Protein Type:	Recombinant
Purification tag / Conjugate:	This TRIP4 protein is labelled with GST tag.
Application:	ELISA, Western Blotting (WB), Antibody Array (AA), Affinity Purification (AP)

Product Details

Purpose:	TRIP4 (Human) Recombinant Protein (P01)
Sequence:	MAVAGAVSGE PLVHWCTQQL RKTFGLDVSE EIIQYVLSIE SAAEIREYVT DLLQGNEGKK GQFIEELITK WQKNDQELIS DPLQQCFKKD EILDGQKSGD HMKRGRKKGR NRQEVPAFTE PDTTAEVKTP FDLAKAQENS NSVKKKTKFV NLYTREGQDR LAVLLPGRHP CDCLGQKHKL INNCLICGRI VCEQEGSGPC LFCGTLVCTH EEQDILQRDS NKSQKLLKLL MSGVENSCHKV DISTKDLLPH QELRIKSGLE KAIKHDKLL EFDRTSIRRT QVIDDESDFY ASDSNQWLSK LERETLQKRE EELRELRHAS RLSKKVTIDF AGRKILEEEN SLAEYHSRLD ETIQAIANGT LNQPLTKLDR SSEEPLGVLV NPNMYQSPQ WVDHTGAASQ KKAFRSSGFG LEFNSFQHQL RIQDQEFQEG FDGGWCLSVH QPWASLLVRG IKRVEGRSWY TPHRGRLWIA ATAKKPSPE VSELQATYRL LRGKDVEFPN DYPSGCLLGC VDLIDCLSQK QFKEQFPDIS QESDSPFVFI CKNPQEMVVK FPIKGNPKIW KLDSKIHQGA KKGLMKQNKAV
Characteristics:	Human TRIP4 full-length ORF (AAH12448, 1 a.a. - 581 a.a.) recombinant protein with GST-tag

Product Details

at N-terminal.

Purification: in vitro wheat germ expression system

Target Details

Target: TRIP4

Alternative Name: TRIP4 ([TRIP4 Products](#))

Background: Full Gene Name: thyroid hormone receptor interactor 4
Synonyms: HsT17391

Gene ID: 9325

Application Details

Application Notes: Optimal working dilution should be determined by the investigator.

Comment: Preparation method: in vitro, wheat germ expression system
Product Quality tested by: 12.5% SDS-PAGE Stained with Coomassie Blue.

Restrictions: For Research Use only

Handling

Buffer: 50 mM Tris-HCl, 10 mM reduced Glutathione, pH =8.0 in the elution buffer.

Handling Advice: Aliquot to avoid repeated freezing and thawing.

Storage: -80 °C

Storage Comment: Best use within three months from the date of receipt of this protein.

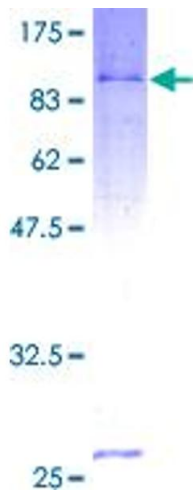


Image 1.