



[Go to Product page](#)

Datasheet for ABIN1323784

## TRIP6 Protein (AA 1-100) (GST tag)

### 1 Image

#### Overview

Quantity:	10 µg
Target:	TRIP6
Protein Characteristics:	AA 1-100
Origin:	Human
Source:	Wheat germ
Protein Type:	Recombinant
Purification tag / Conjugate:	This TRIP6 protein is labelled with GST tag.
Application:	Western Blotting (WB), ELISA, Antibody Array (AA), Affinity Purification (AP)

#### Product Details

Purpose:	TRIP6 (Human) Recombinant Protein (Q01)
Sequence:	MSGPTWLPPK QPEPARAPQG RAIPRGTPGP PPAHGAALQP HPRVNFCLPL SEQCYQAPGG PEDRGPAWVG SHGVLQHTQG LPADRGGLRP GSLDAEIDLL
Characteristics:	Human TRIP6 partial ORF ( NP_003293, 1 a.a. - 100 a.a.) recombinant protein with GST-tag at N-terminal.
Purification:	in vitro wheat germ expression system

#### Target Details

Target:	TRIP6
Alternative Name:	TRIP6 ( <a href="#">TRIP6 Products</a> )

## Target Details

Background:	Full Gene Name: thyroid hormone receptor interactor 6 Synonyms: MGC10556,MGC10558,MGC29959,MGC3837,MGC4423,OIP1,ZRP-1
Gene ID:	7205
NCBI Accession:	<a href="#">NM_003302</a>
Pathways:	<a href="#">Cell-Cell Junction Organization</a>

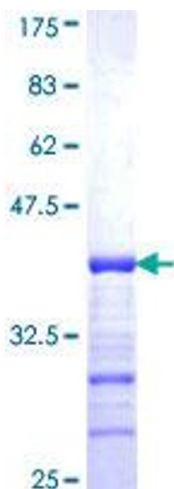
## Application Details

Application Notes:	Optimal working dilution should be determined by the investigator.
Comment:	Preparation method: in vitro, wheat germ expression system Product Quality tested by: 12.5% SDS-PAGE Stained with Coomassie Blue.
Restrictions:	For Research Use only

## Handling

Buffer:	50 mM Tris-HCl, 10 mM reduced Glutathione, pH =8.0 in the elution buffer.
Handling Advice:	Aliquot to avoid repeated freezing and thawing.
Storage:	-80 °C
Storage Comment:	Best use within three months from the date of receipt of this protein.

## Images



**Image 1.**