



[Go to Product page](#)

Datasheet for ABIN1323826

## TRPC6 Protein (AA 543-592) (GST tag)

### 1 Image

#### Overview

Quantity:	10 µg
Target:	TRPC6
Protein Characteristics:	AA 543-592
Origin:	Human
Source:	Wheat germ
Protein Type:	Recombinant
Purification tag / Conjugate:	This TRPC6 protein is labelled with GST tag.
Application:	Western Blotting (WB), ELISA, Antibody Array (AA), Affinity Purification (AP)

#### Product Details

Purpose:	TRPC6 (Human) Recombinant Protein (Q01)
Sequence:	ARFMAFWHAS KAQSIIDAND TLKDLTKVTL GDNVKYYNLA RIKWDPSDPQ
Characteristics:	Human TRPC6 partial ORF ( NP_004612, 543 a.a. - 592 a.a.) recombinant protein with GST-tag at N-terminal.
Purification:	in vitro wheat germ expression system

#### Target Details

Target:	TRPC6
Alternative Name:	TRPC6 ( <a href="#">TRPC6 Products</a> )
Background:	Full Gene Name: transient receptor potential cation channel, subfamily C, member 6

## Target Details

Synonyms: FLJ11098,FLJ14863,FSGS2,TRP6

Gene ID: 7225

NCBI Accession: [NM\\_004621](#)

## Application Details

Application Notes: Optimal working dilution should be determined by the investigator.

Comment: Preparation method: in vitro, wheat germ expression system  
Product Quality tested by: 12.5% SDS-PAGE Stained with Coomassie Blue.

Restrictions: For Research Use only

## Handling

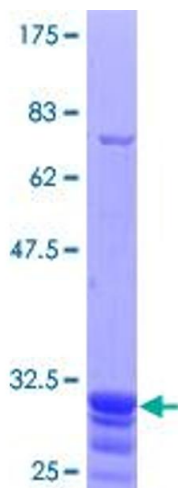
Buffer: 50 mM Tris-HCl, 10 mM reduced Glutathione, pH =8.0 in the elution buffer.

Handling Advice: Aliquot to avoid repeated freezing and thawing.

Storage: -80 °C

Storage Comment: Best use within three months from the date of receipt of this protein.

## Images



**Image 1.**