

Datasheet for ABIN1323840  
**TRUB1 Protein (AA 1-349) (GST tag)**



[Go to Product page](#)

1 Image

## Overview

Quantity:	10 µg
Target:	TRUB1
Protein Characteristics:	AA 1-349
Origin:	Human
Source:	Wheat germ
Protein Type:	Recombinant
Purification tag / Conjugate:	This TRUB1 protein is labelled with GST tag.
Application:	ELISA, Western Blotting (WB), Antibody Array (AA), Affinity Purification (AP)

## Product Details

Purpose:	TRUB1 (Human) Recombinant Protein (P01)
Sequence:	MAASEAAVVS SPCLKTDTSP VLETAGTVAA MAATPSARAA AAVVAAAART GSEARVSKAA LTKLLSLSG VFAVHKPKGP TSAELLNRLK EKLLAEAGMP SPEWTKRKKQ TLKIGHGGTL DSAARGVLVV GIGSGTKMLT SMLSGSKRYT AIGELGKATD TLDSTGRVTE EKPDKITQE DIEGILQKFT GNIMQVPLY SALKKDGQRL STLMKRGEVV EAKPARPVTV YSISLQKFQP PFFTLDVECG GGFYIRSLVS DIGKELSSCA NVLELTRTKQ GPFTLEEHAL PEDKWTIDDI AQSLEHCSSL FPAELALKKS KPESNEQVLS CEYITLNEPK REDDVIKTC
Characteristics:	Human TRUB1 full-length ORF ( NP_631908.1, 1 a.a. - 349 a.a.) recombinant protein with GST-tag at N-terminal.
Purification:	in vitro wheat germ expression system

## Target Details

Target:	TRUB1
Alternative Name:	TRUB1 ( <a href="#">TRUB1 Products</a> )
Background:	Full Gene Name: TruB pseudouridine (psi) synthase homolog 1 (E. coli) Synonyms: PUS4
Gene ID:	142940
NCBI Accession:	<a href="#">NM_139169</a>

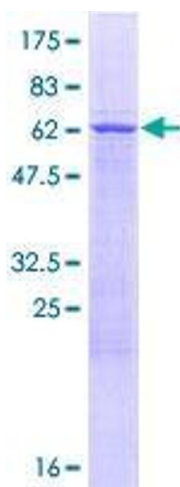
## Application Details

Application Notes:	Optimal working dilution should be determined by the investigator.
Comment:	Preparation method: in vitro, wheat germ expression system Product Quality tested by: 12.5% SDS-PAGE Stained with Coomassie Blue.
Restrictions:	For Research Use only

## Handling

Buffer:	50 mM Tris-HCl, 10 mM reduced Glutathione, pH =8.0 in the elution buffer.
Handling Advice:	Aliquot to avoid repeated freezing and thawing.
Storage:	-80 °C
Storage Comment:	Best use within three months from the date of receipt of this protein.

## Images



**Image 1.**